

Appendix

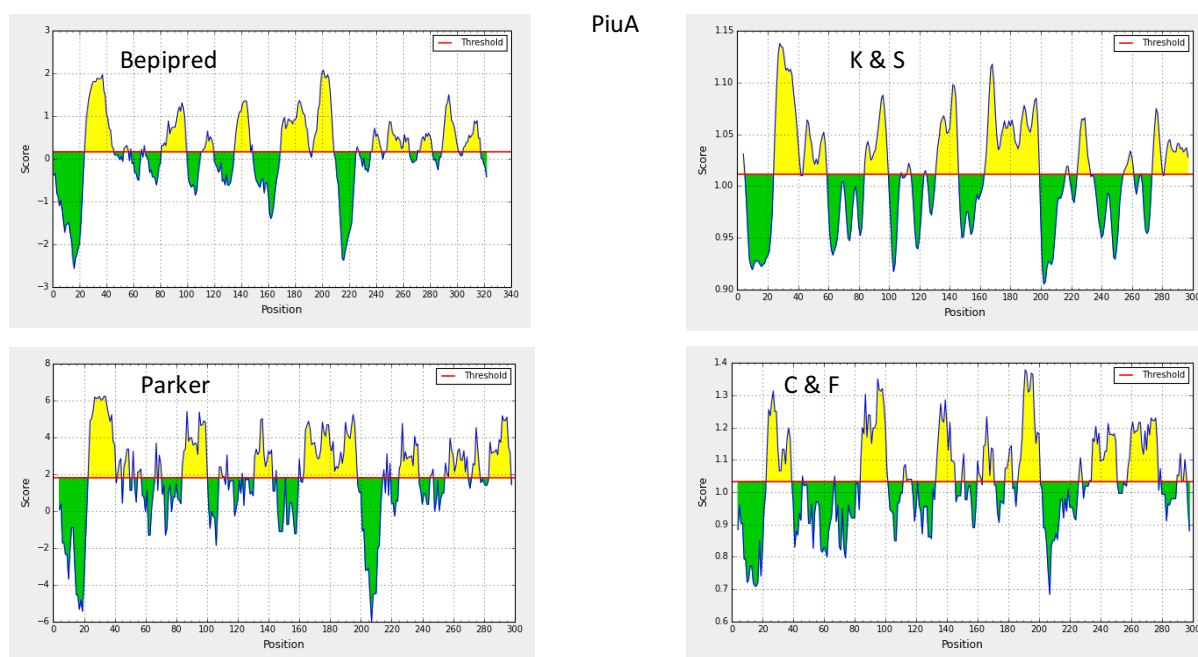


Figure A1 Linear epitope predictions for PiuA.

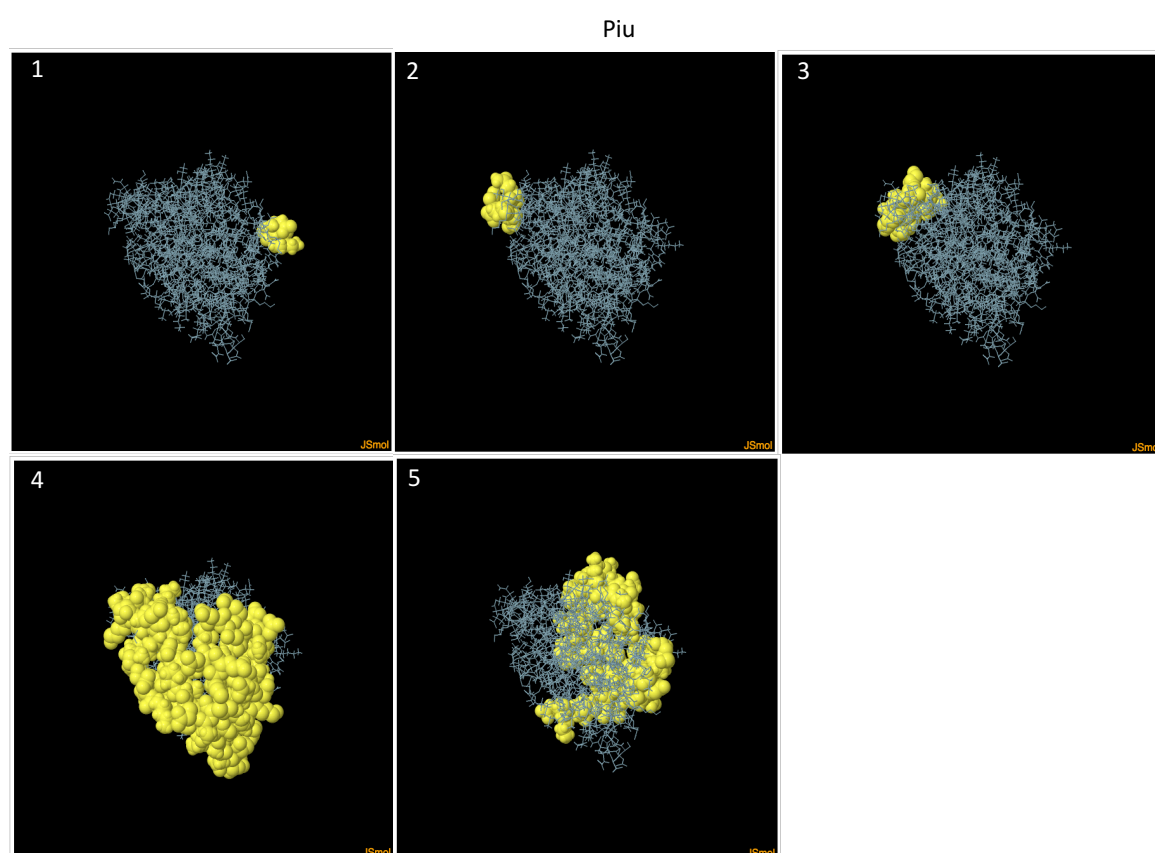


Figure A2 ElliPro predicted discontinuous epitopes for PiuA.

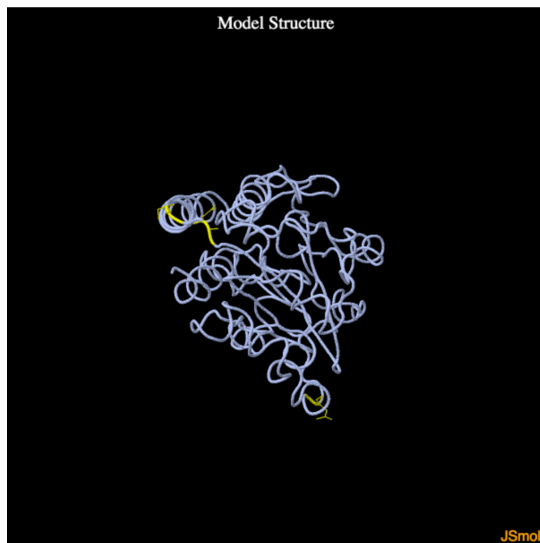
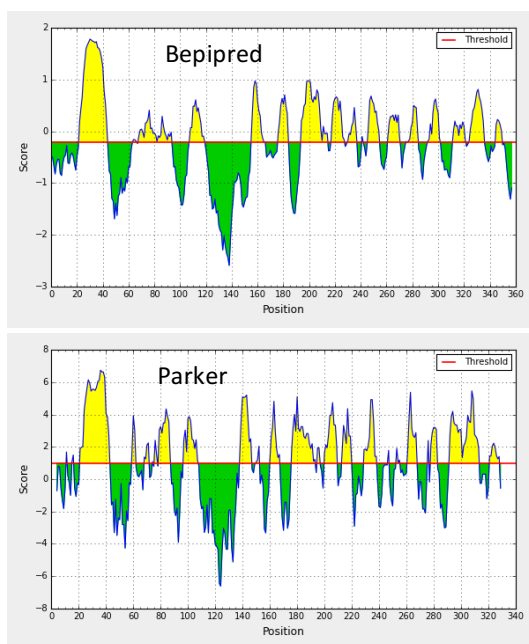


Figure A3 DiscoTope2 predicted discontinuous epitopes for PiuaA.



SPD_1609

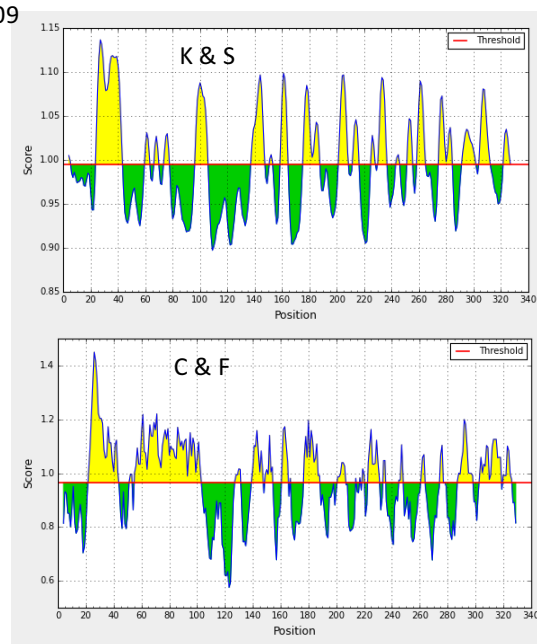


Figure A4 Linear epitope prediction of the SPD_1609 protein.

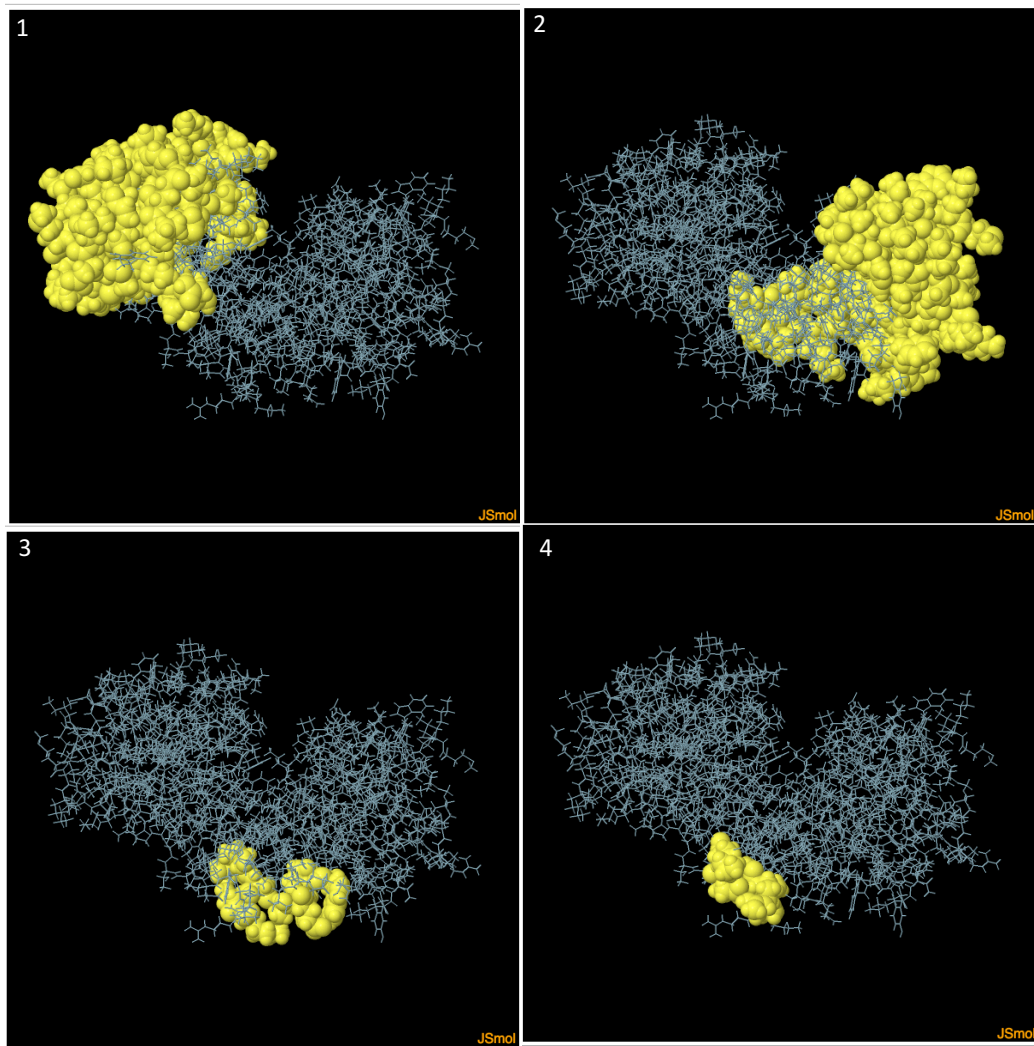


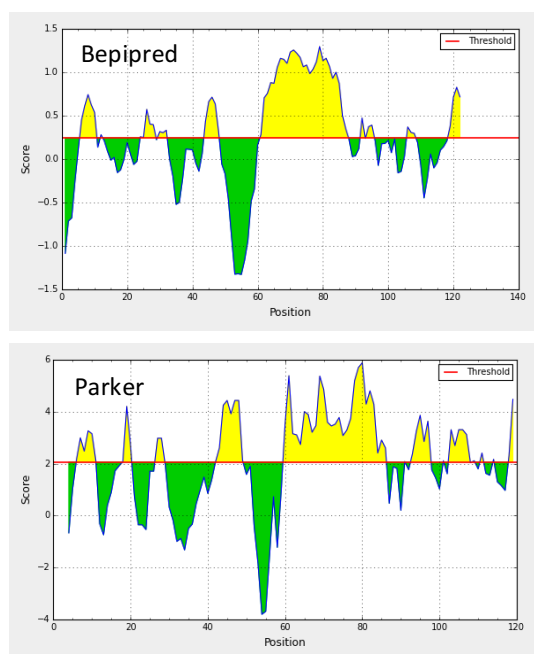
Figure A5 ElliPro predicted discontinuous epitopes for SPD_1609.

The numbers represent the different epitopes predicted in order of decreasing overall score with 1 having the highest score. The yellow spheres represent residues part of the predicted epitope.



Figure A6 DiscoTope2 predicted discontinuous epitopes for SPD_1609.

The parts coloured yellow are the predicted epitopes.



PitA

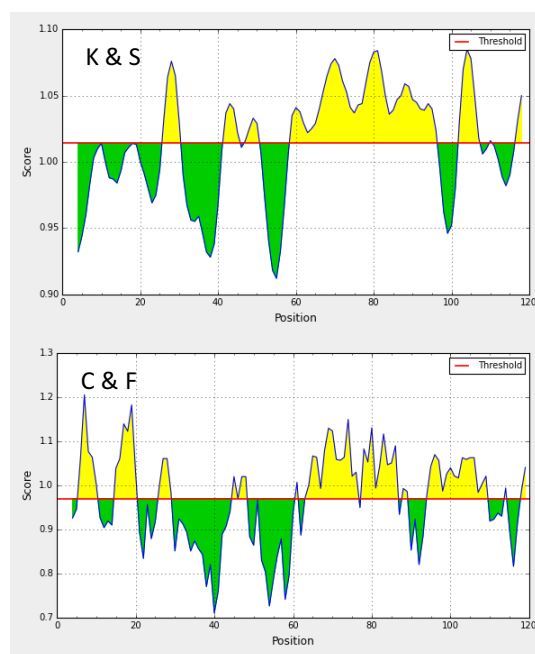


Figure A7 Linear epitope predictions of the PitA protein.

Pit

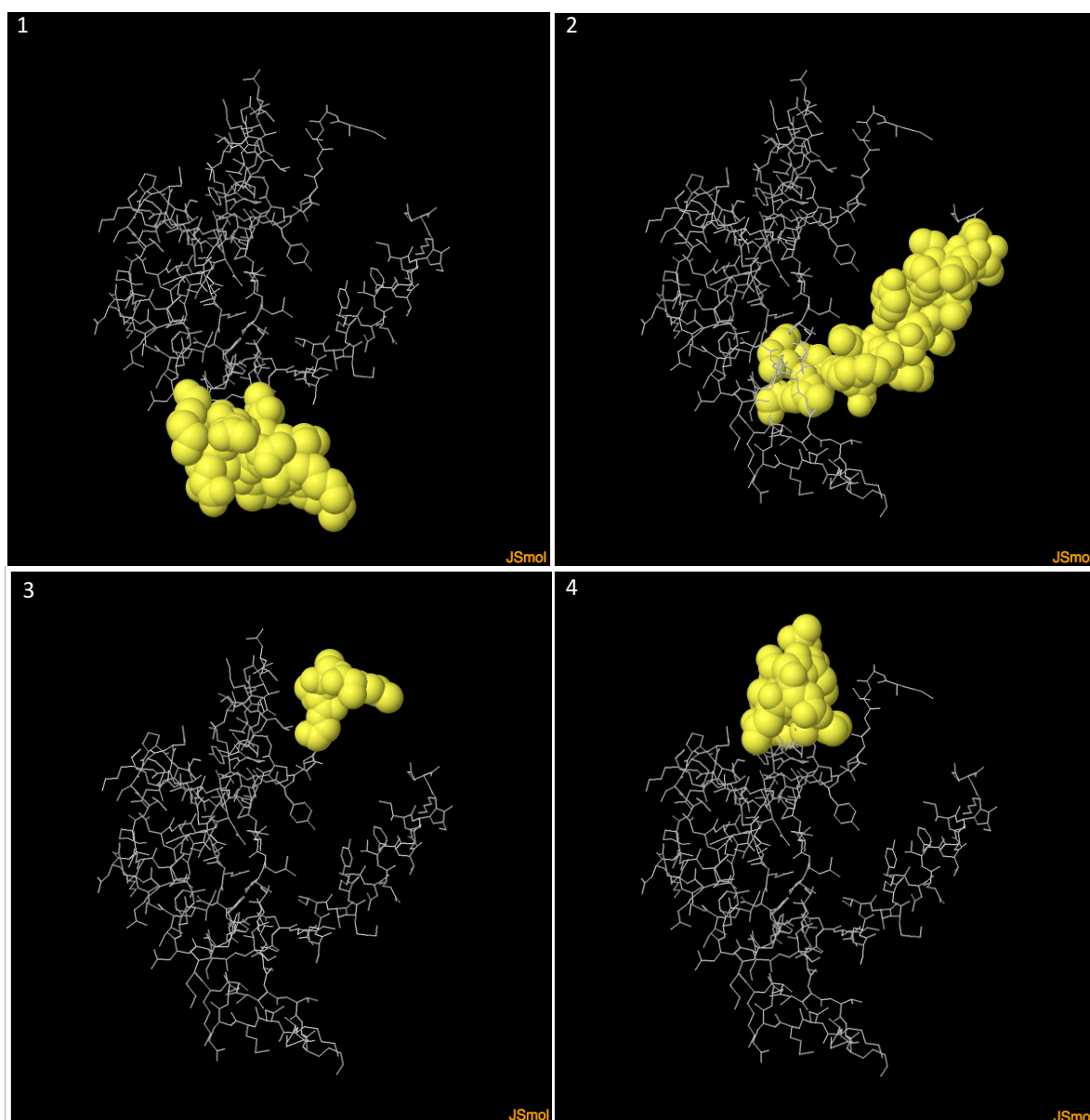


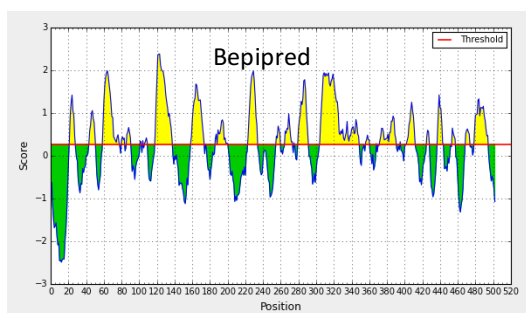
Figure A8 ElliPro predicted discontinuous epitopes for PitA.

The numbers represent the different epitopes predicted in order of decreasing overall score with one having the highest score. The yellow spheres represent residues that are part of the predicted epitope.



Figure A9 DiscoTope2 predicted discontinuous epitopes for PitA.

The parts coloured yellow are the predicted epitopes.



AdcA

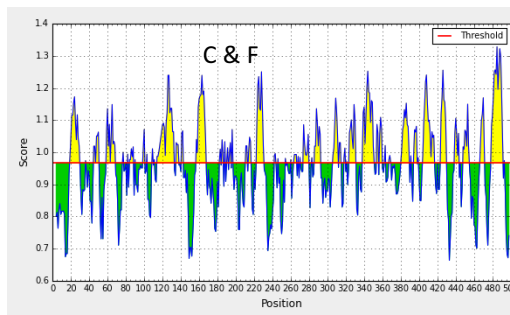
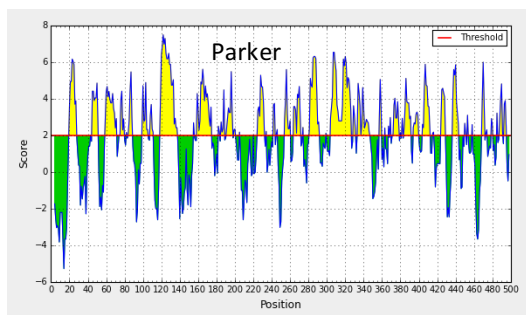
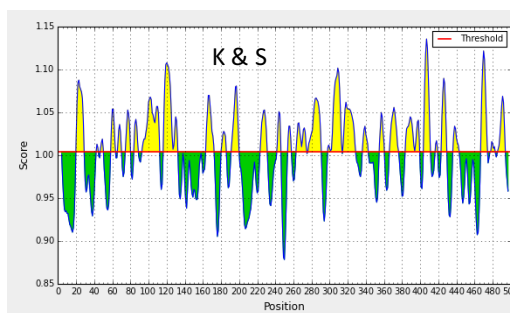


Figure A10 Linear epitope predictions of the AdcA protein.

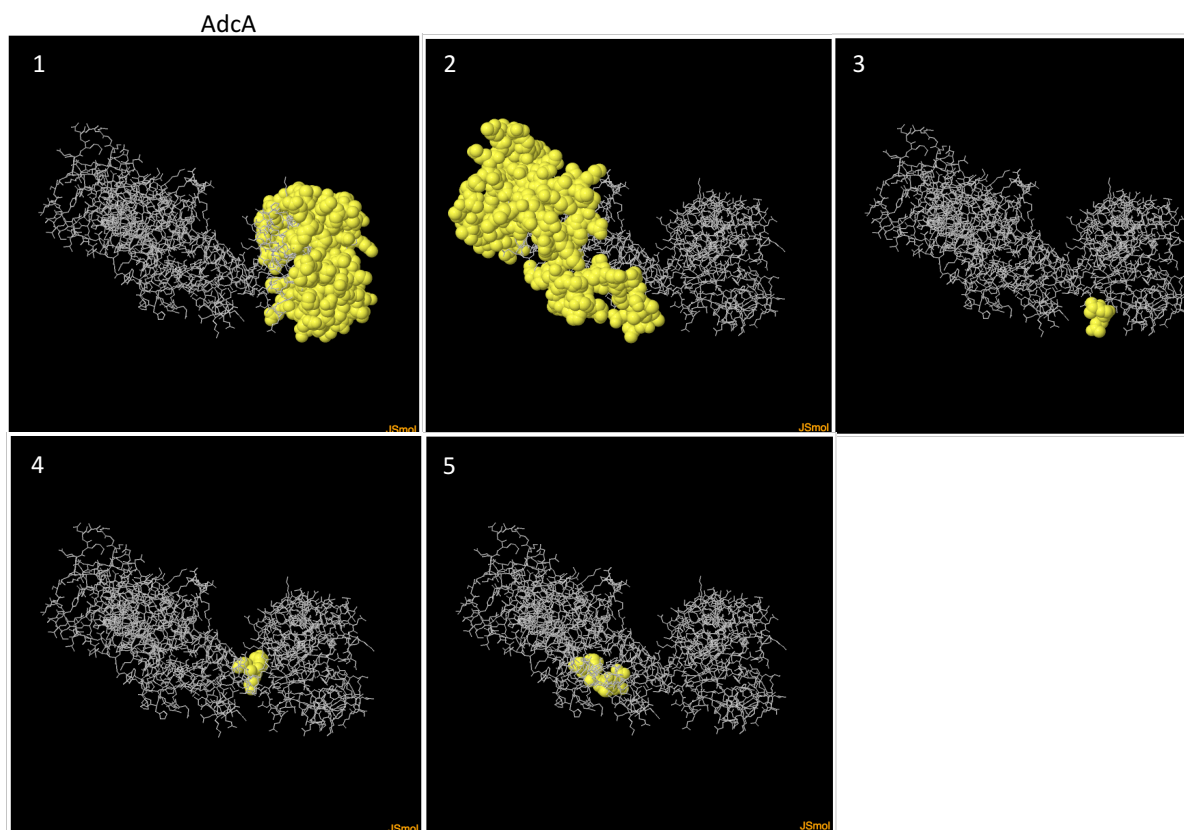


Figure A11 ElliPro predicted discontinuous epitopes for AdcA.

The numbers represent the different epitopes predicted in order of decreasing overall score with 1 having the highest score. The yellow spheres represent residues that are part of the predicted epitope.

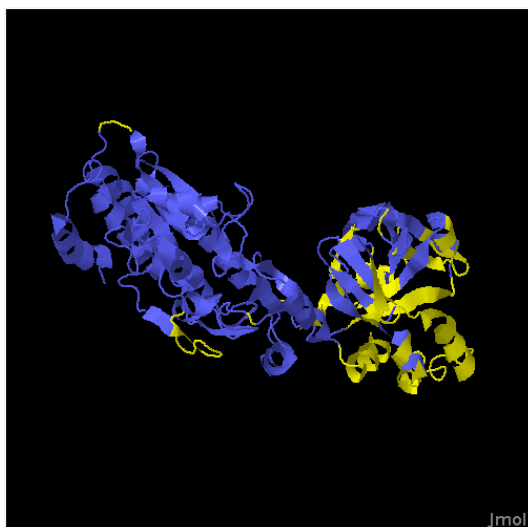
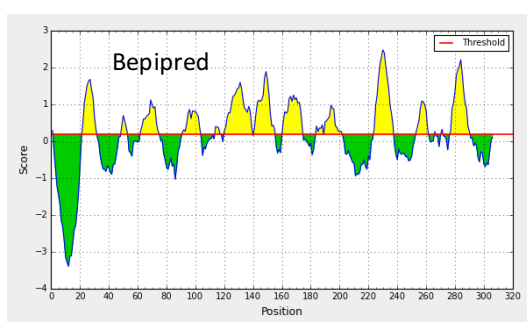


Figure A12 DiscoTope2 predicted discontinuous epitopes for AdcA.

The parts coloured yellow are the predicted epitopes.



Lmb

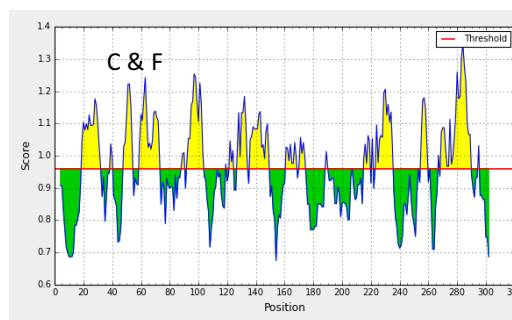
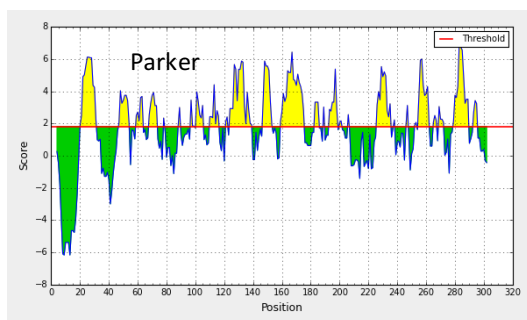
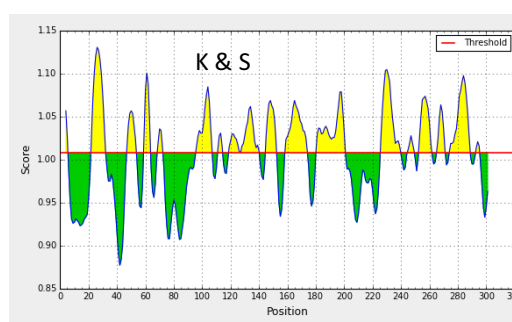


Figure A13 Linear epitope predictions of the Lmb protein.

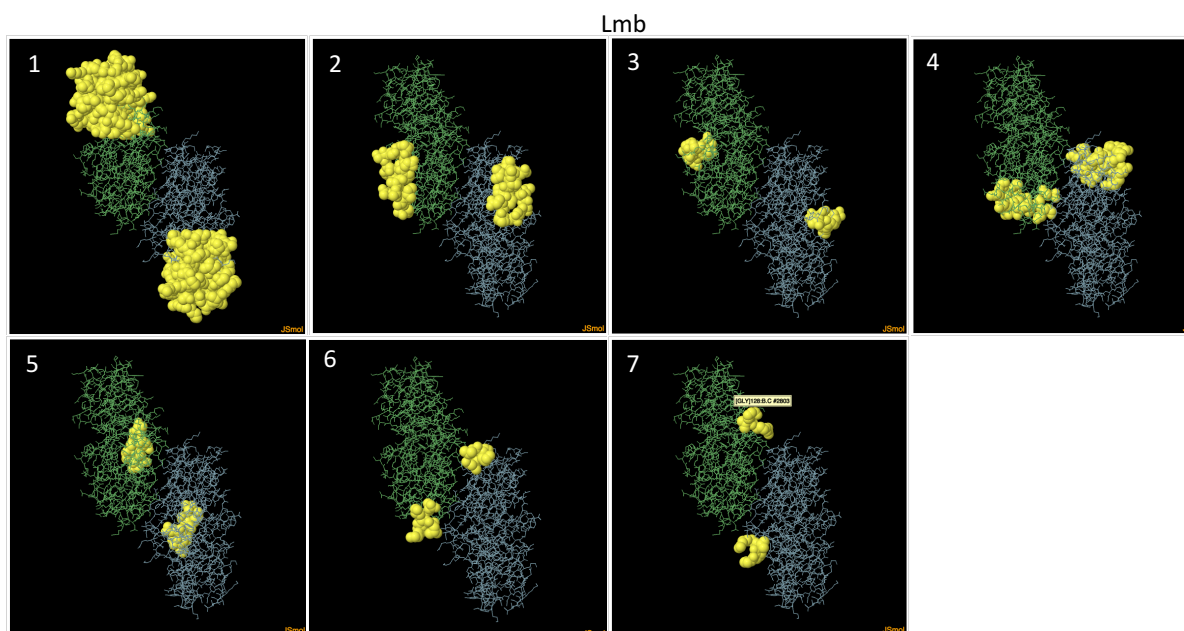


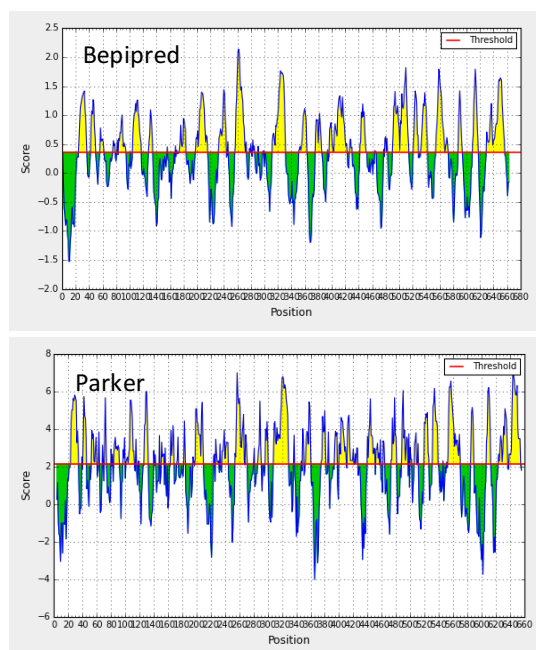
Figure A14 ElliPro predicted discontinuous epitopes for Lmb.

The numbers represent the different epitopes predicted in order of decreasing overall score with 1 having the highest score. The yellow spheres represent residues that are part of the predicted epitope.



Figure A15 DiscoTope2 predicted discontinuous epitopes for Lmb.

The parts coloured yellow are the predicted epitopes.



AliA

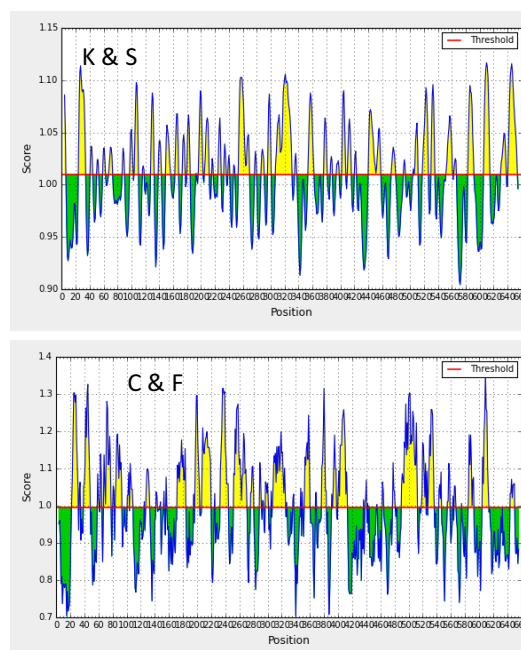


Figure A16 Linear epitope predictions of the AliA protein.

AliA

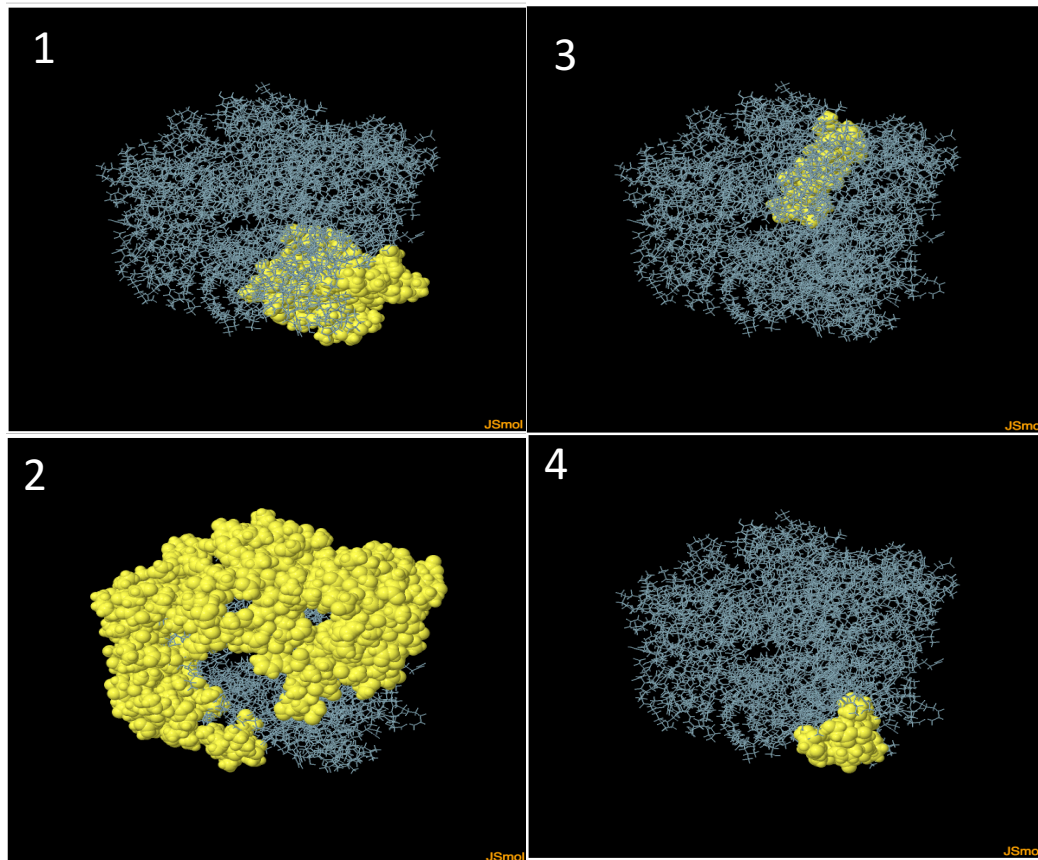


Figure A17 ElliPro predicted discontinuous epitopes for AliA.

The numbers represent the different epitopes predicted in order of decreasing overall score with 1 having the highest score. The yellow spheres represent residues that are part of the predicted epitope.

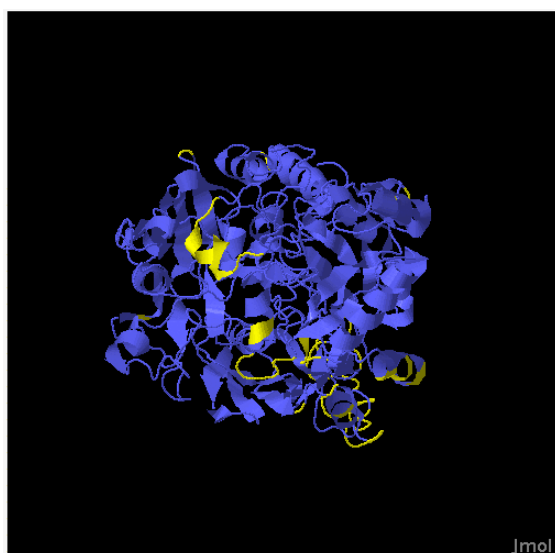
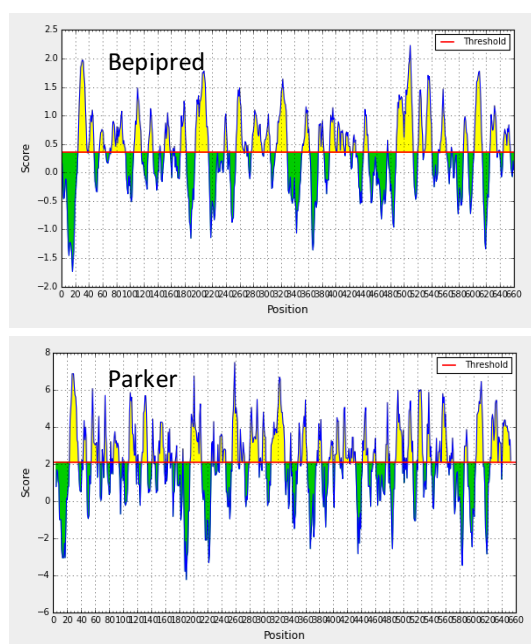


Figure A18 DiscoTope2 predicted discontinuous epitopes for AmiA.

The parts coloured yellow are the predicted epitopes.



AmiA

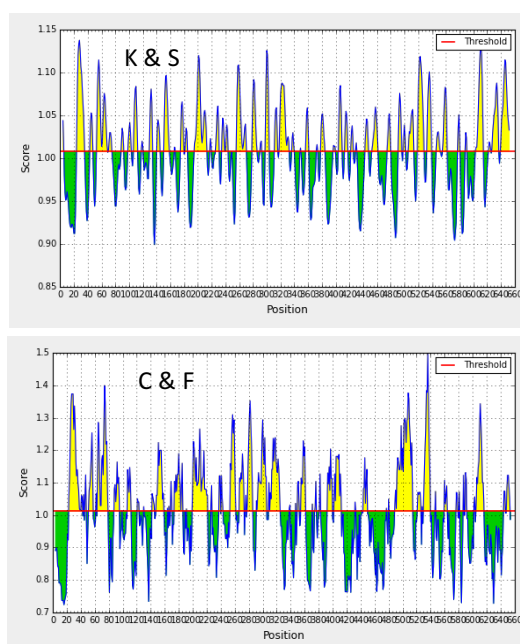


Figure A19 Linear epitope predictions of the AmiA protein.

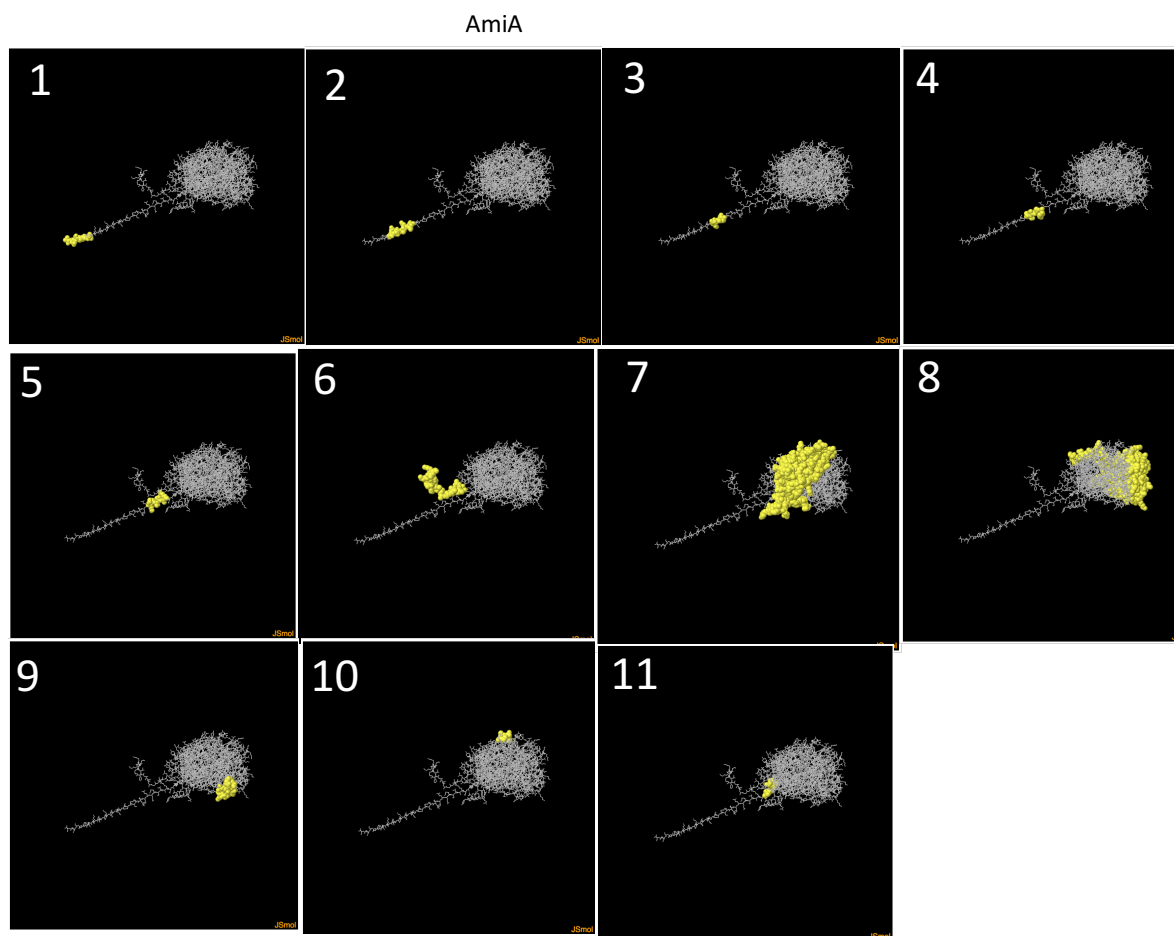


Figure A20 ElliPro predicted discontinuous epitopes for AmiA.

The numbers represent the different epitopes predicted in order of decreasing overall score with 1 having the highest score. The yellow spheres represent residues that are part of the predicted epitope.

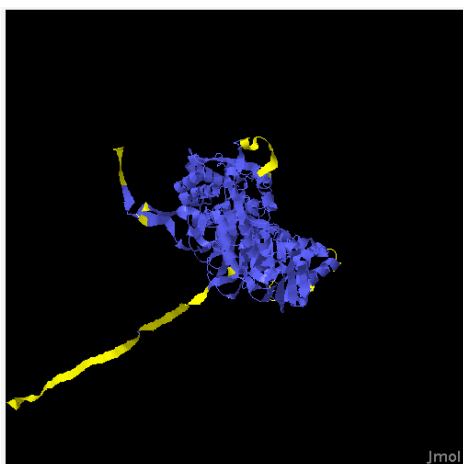
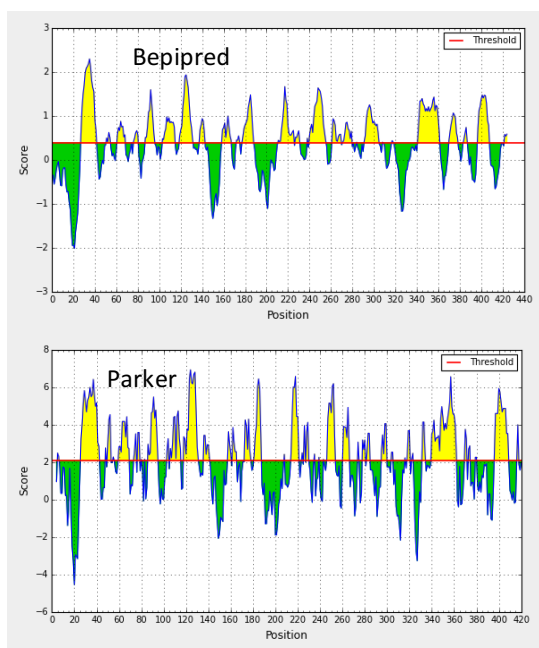


Figure A21 DiscoTope2 predicted discontinuous epitopes for AmiA.

The parts coloured yellow are the predicted epitopes.



MalX

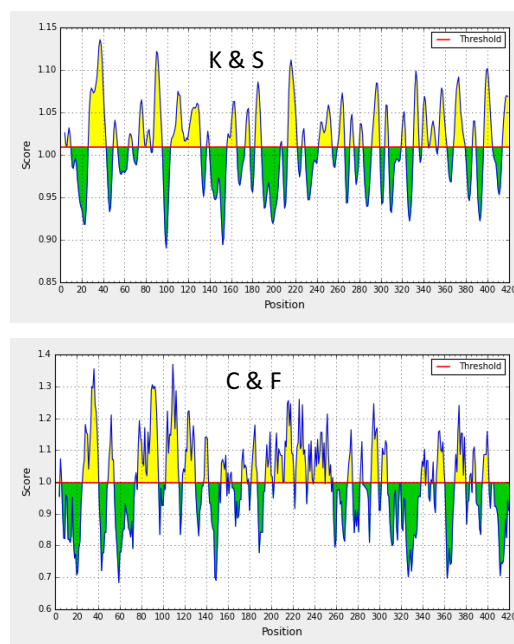


Figure A22 Linear epitope predictions of the MalX protein.

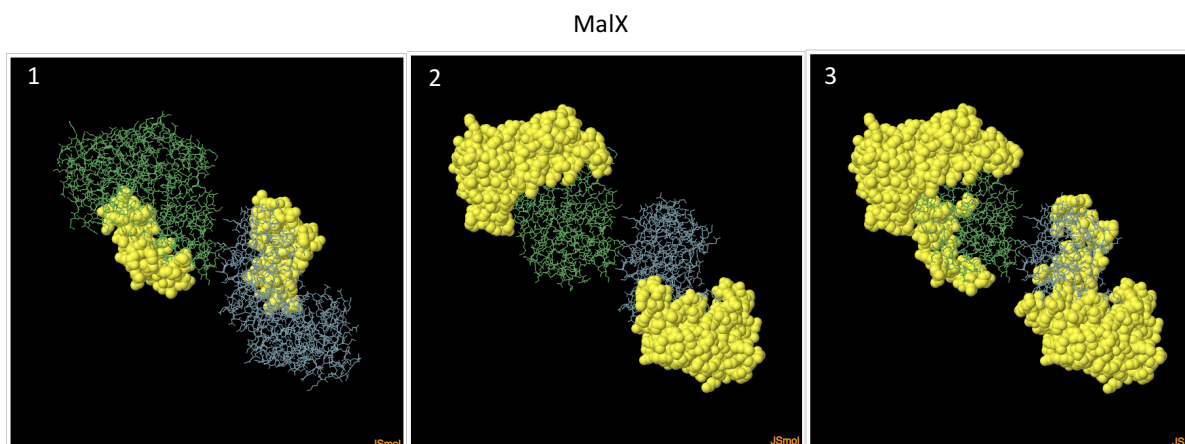


Figure A23 ElliPro predicted discontinuous epitopes for MaIX.

The numbers represent the different epitopes predicted in order of decreasing overall score with 1 having the highest score. The yellow spheres represent residues that are part of the predicted epitope.

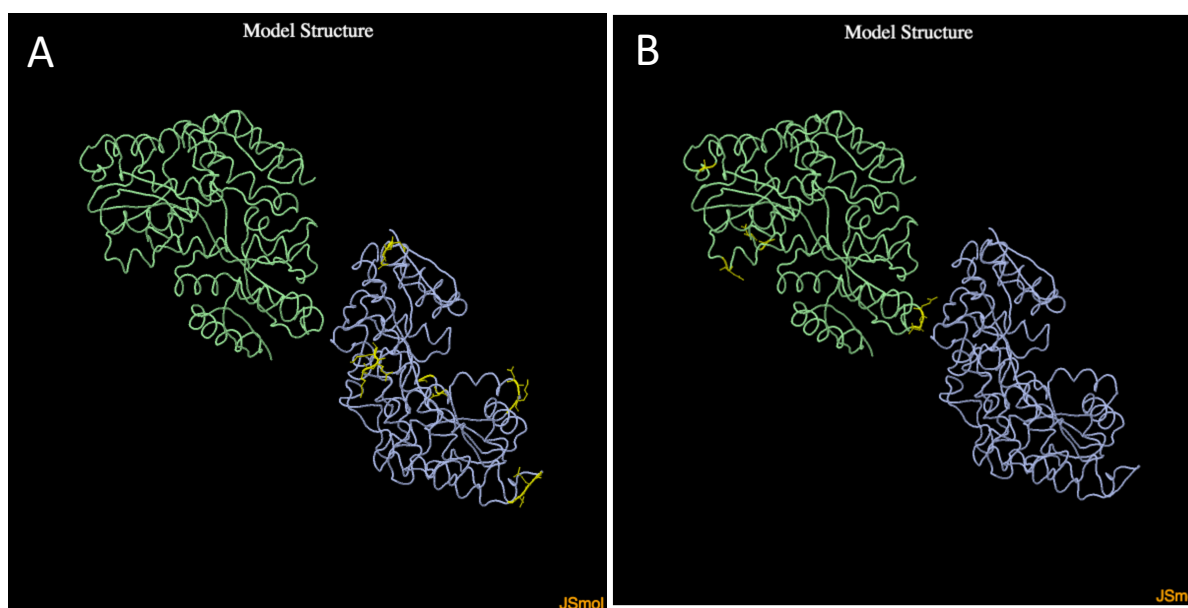
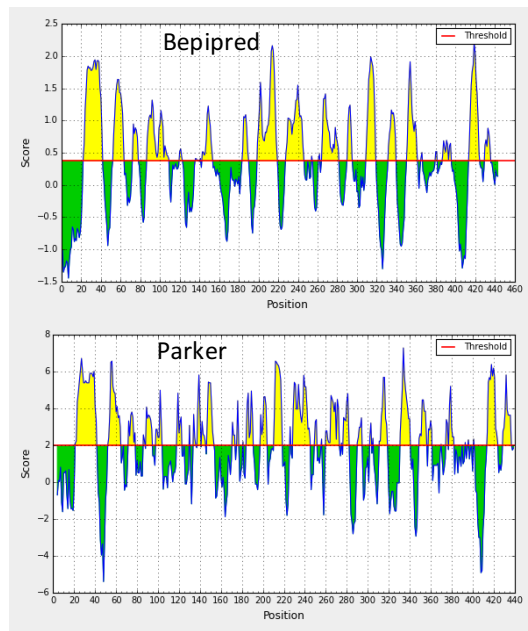


Figure A24 DiscoTope2 predicted discontinuous epitopes for MaIX.

The parts coloured yellow are the predicted epitopes.



YesO_2

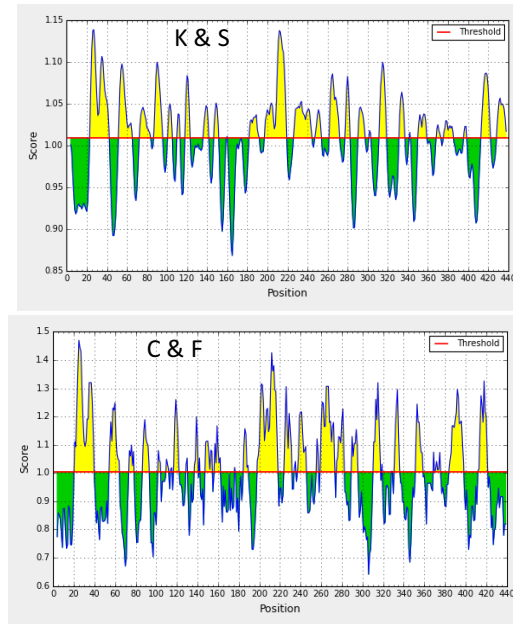


Figure A25 Linear epitope predictions of the YesO_2 protein.

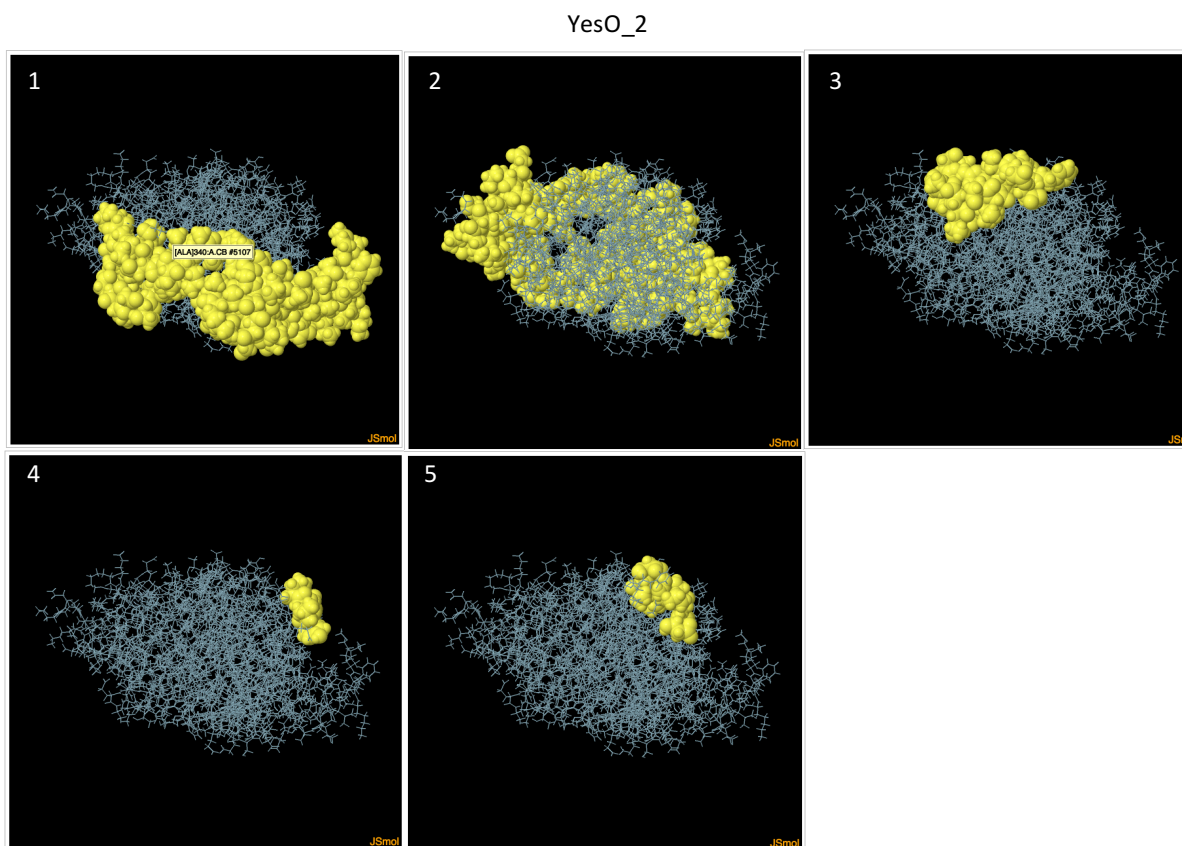


Figure A26 ElliPro predicted discontinuous epitopes for YesO_2.

The numbers represent the different epitopes predicted in order of decreasing overall score with 1 having the highest score. The yellow spheres represent residues that are part of the predicted epitope.



Figure A27 DiscoTope2 predicted discontinuous epitopes for YesO_2.

The parts coloured yellow are the predicted epitopes.

Group_2005

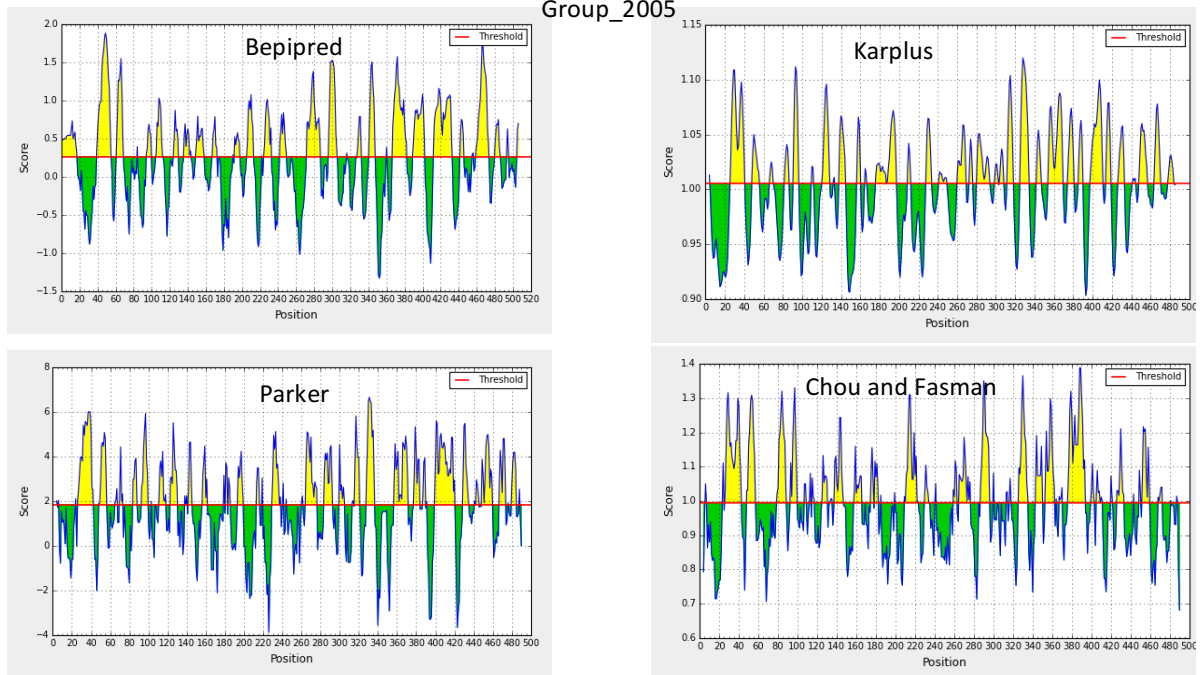


Figure A28 Linear epitope predictions of the Group_2005.

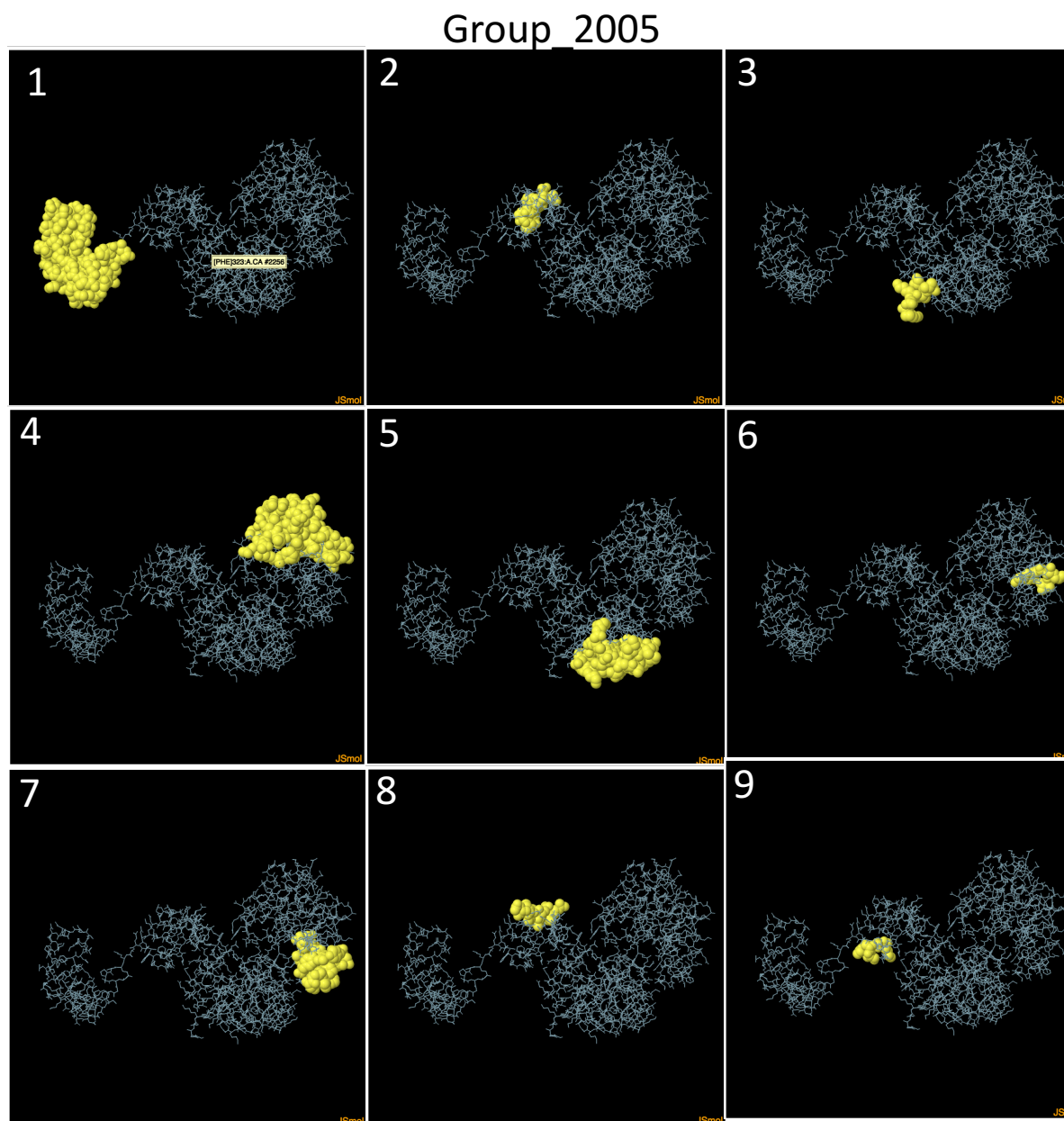


Figure A29 ElliPro predicted discontinuous epitopes for Group_2005.

The numbers represent the different epitopes predicted in order of decreasing overall score with 1 having the highest score. The yellow spheres represent residues that are part of the predicted epitope.

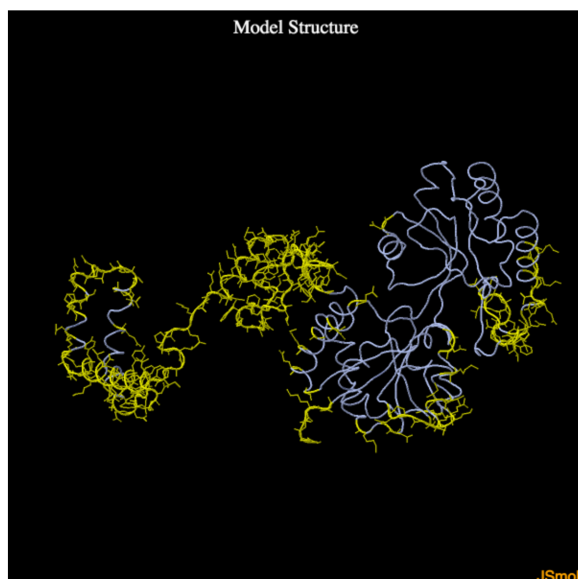


Figure A30 DiscoTope2 predicted discontinuous epitopes for Group_2005.
The parts coloured yellow are the predicted epitopes.

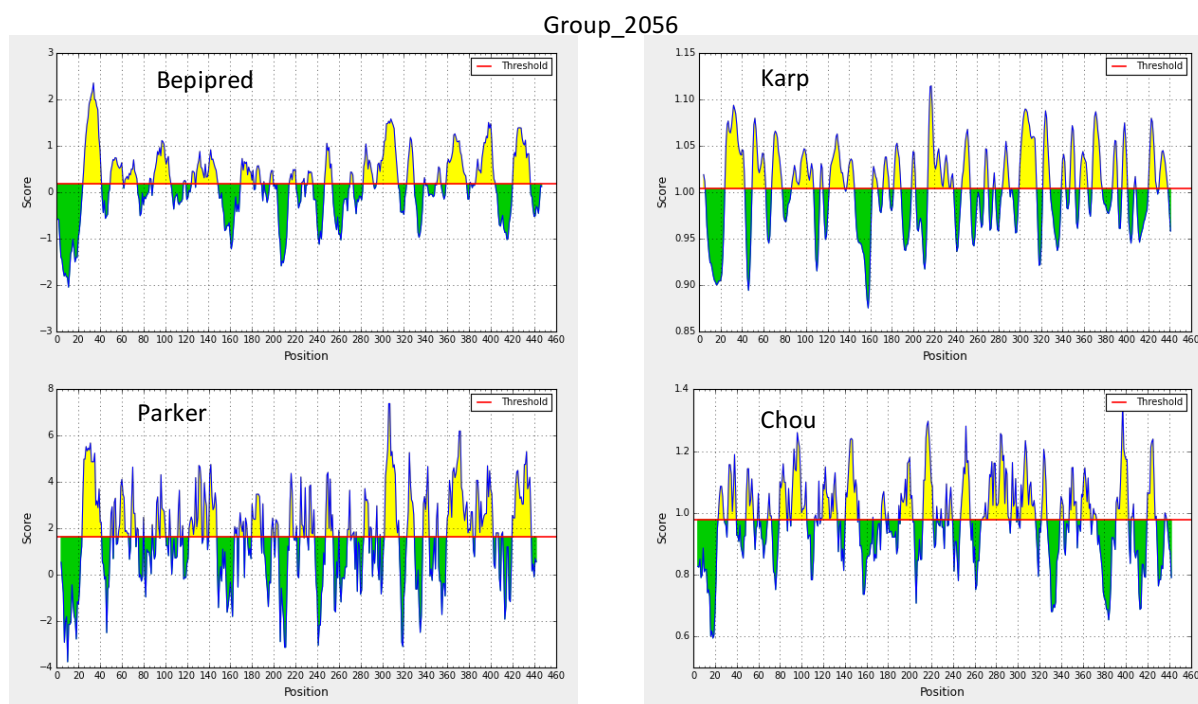


Figure A31 Linear epitope predictions of the Group_2056.

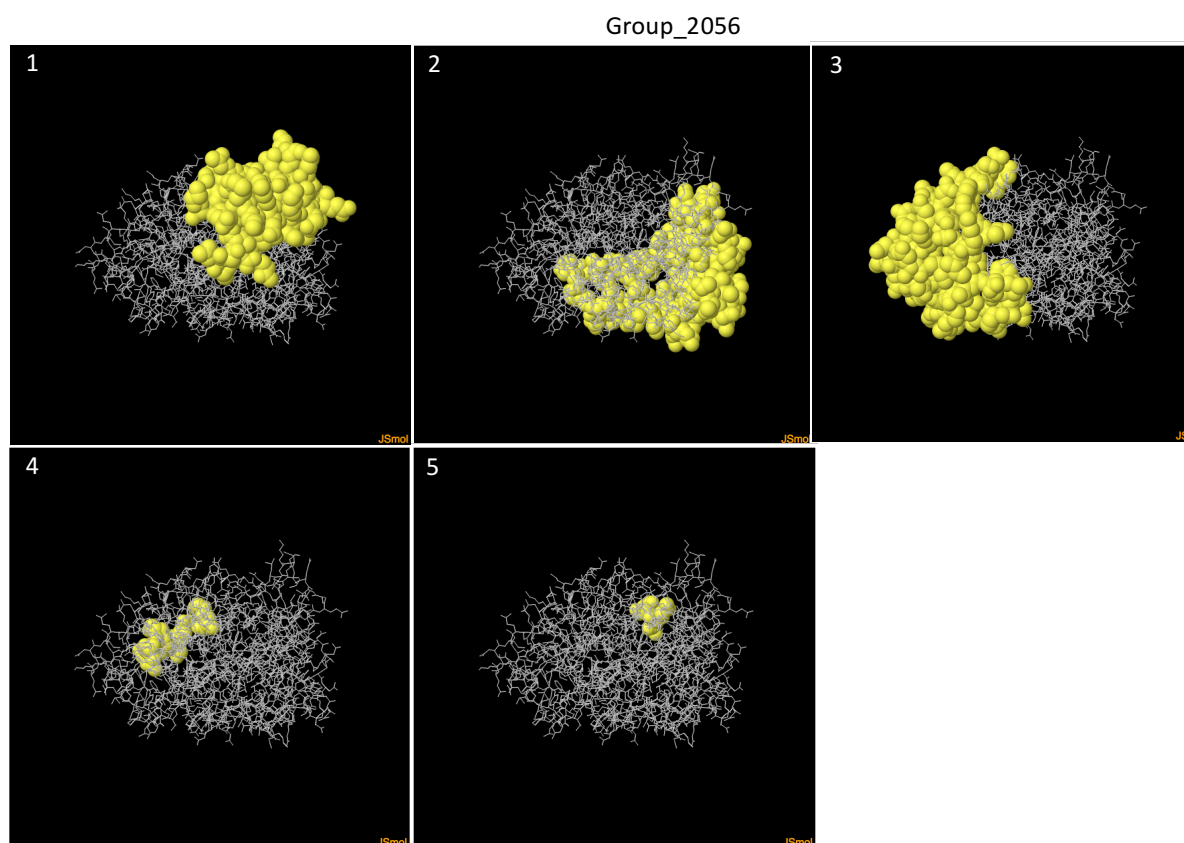


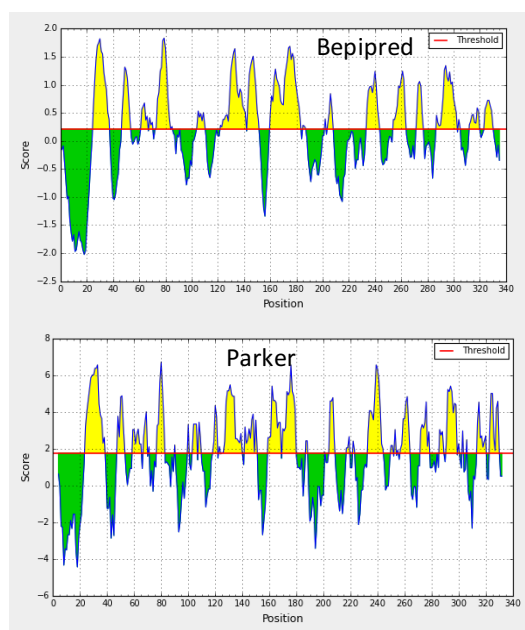
Figure A32 ElliPro predicted discontinuous epitopes for Group_2056.

The numbers represent the different epitopes predicted in order of decreasing overall score with 1 having the highest score. The yellow spheres represent residues that are part of the predicted epitope.



Figure A33 DiscoTope2 predicted discontinuous epitopes for Group_2056.

The parts coloured yellow are the predicted epitopes.



TauA

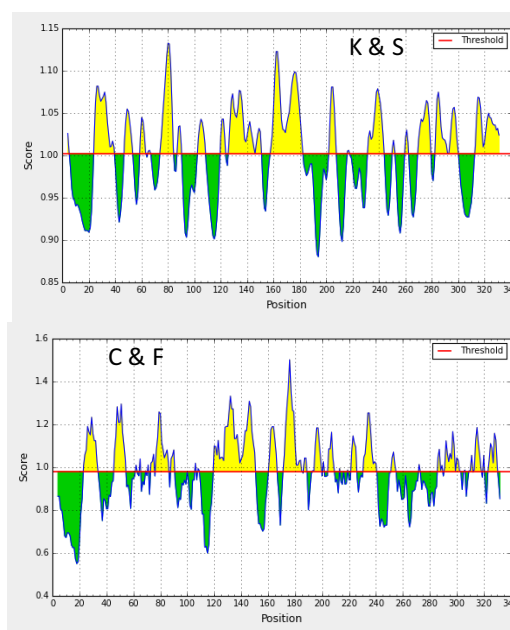


Figure A34 Linear epitope predictions of the TauA protein.

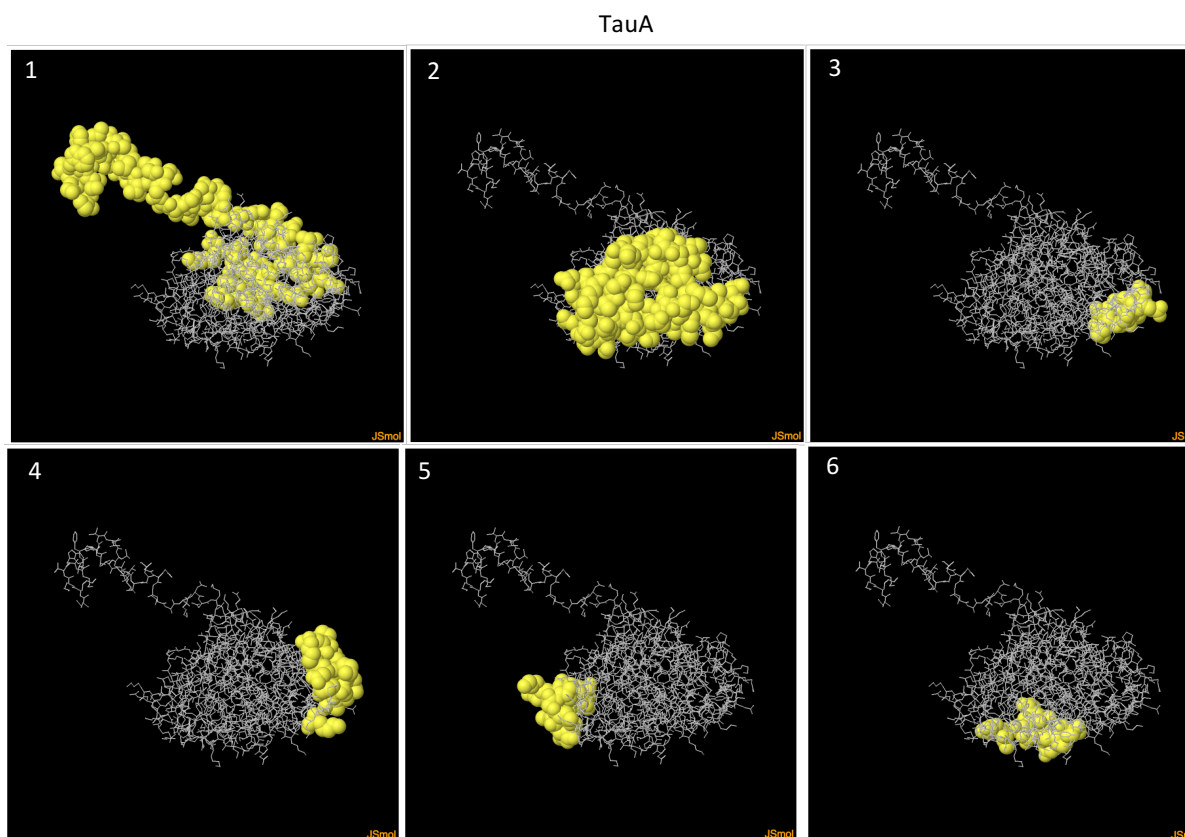


Figure A35 ElliPro predicted discontinuous epitopes for TauA.

The numbers represent the different epitopes predicted in order of decreasing overall score with 1 having the highest score. The yellow spheres represent residues that are part of the predicted epitope.

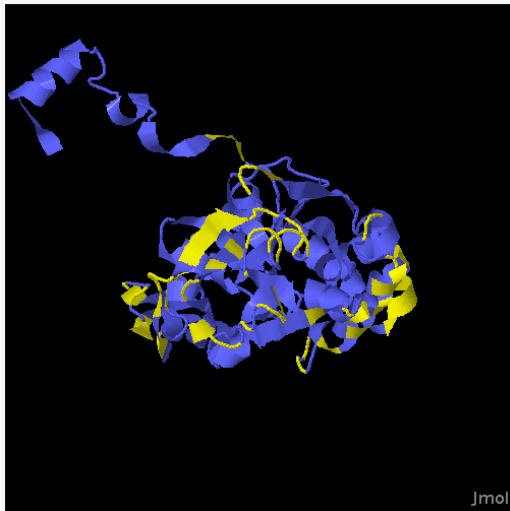
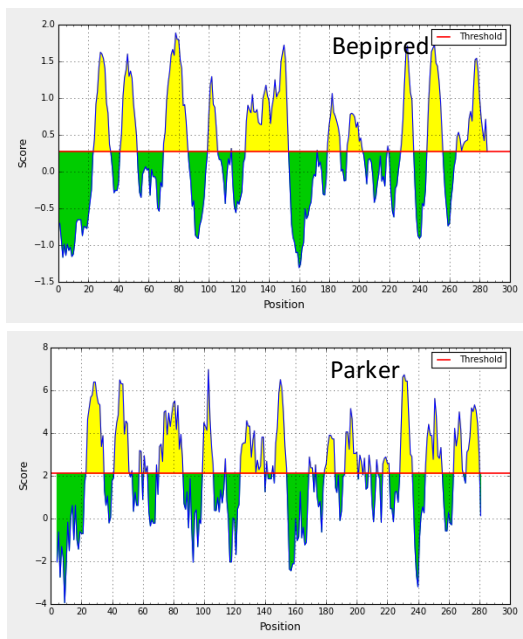


Figure A36 DiscoTope2 predicted discontinuous epitopes for TauA.
The parts coloured yellow are the predicted epitopes.



MetQ

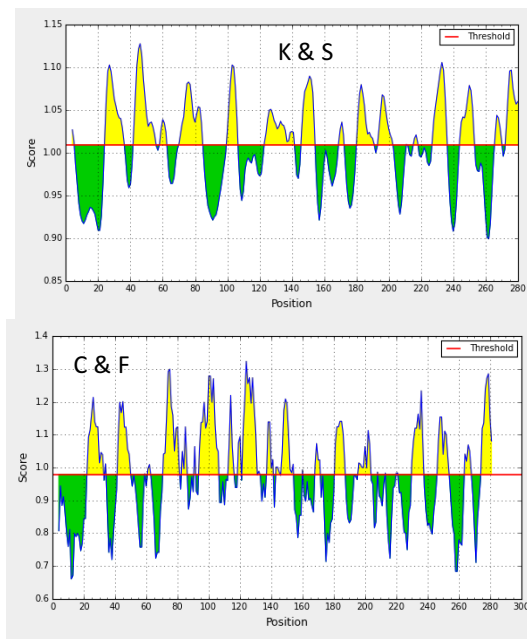


Figure A37 Linear epitope predictions of the MetQ protein.

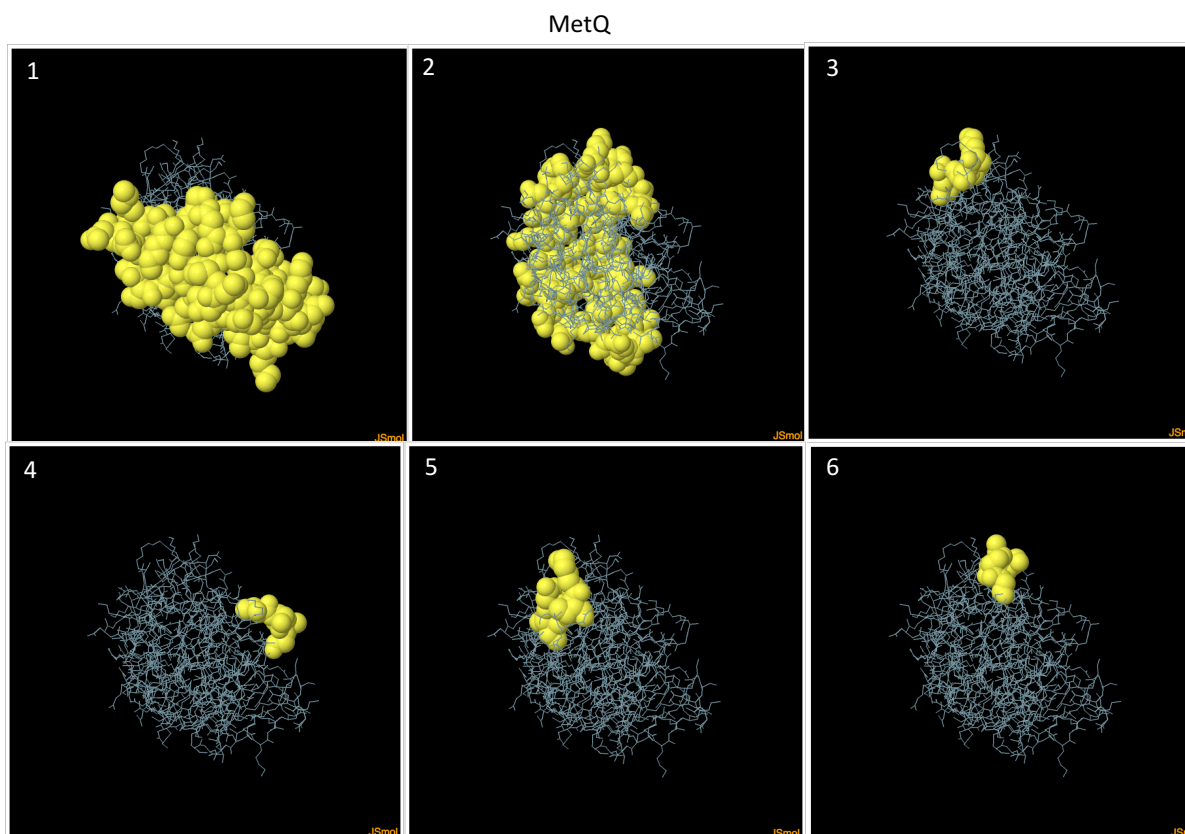


Figure A38 ElliPro predicted discontinuous epitopes for MetQ.

The numbers represent the different epitopes predicted in the order of decreasing overall score with 1 having the highest score. The yellow spheres represent residues that are part of the predicted epitope.

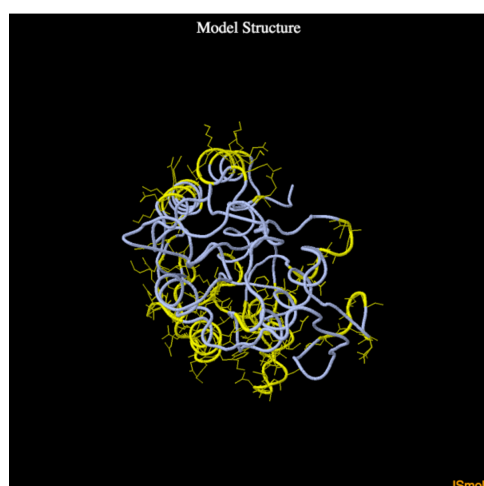
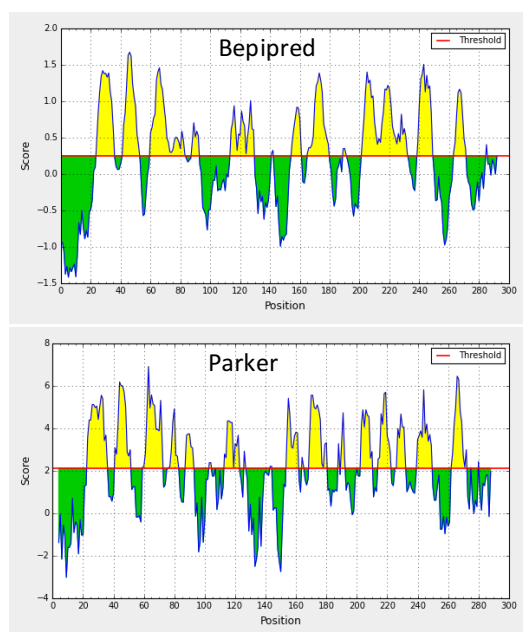


Figure A39 DiscoTope2 predicted discontinuous epitopes for MetQ.

The parts coloured yellow are the predicted epitopes.



PstS_2

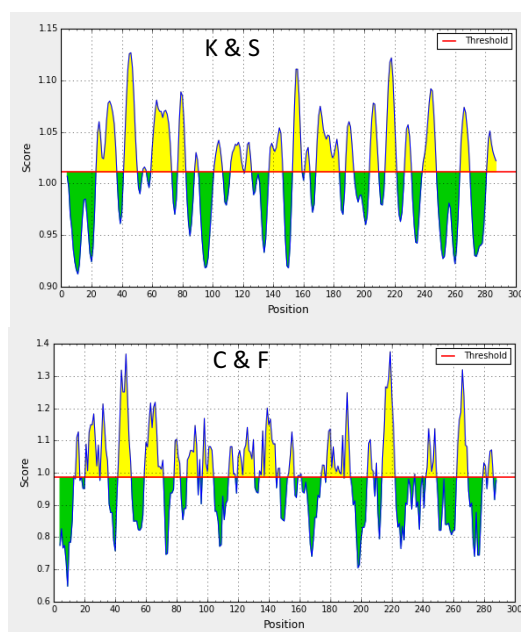


Figure A40 Linear epitope predictions of the PstS_2 protein.

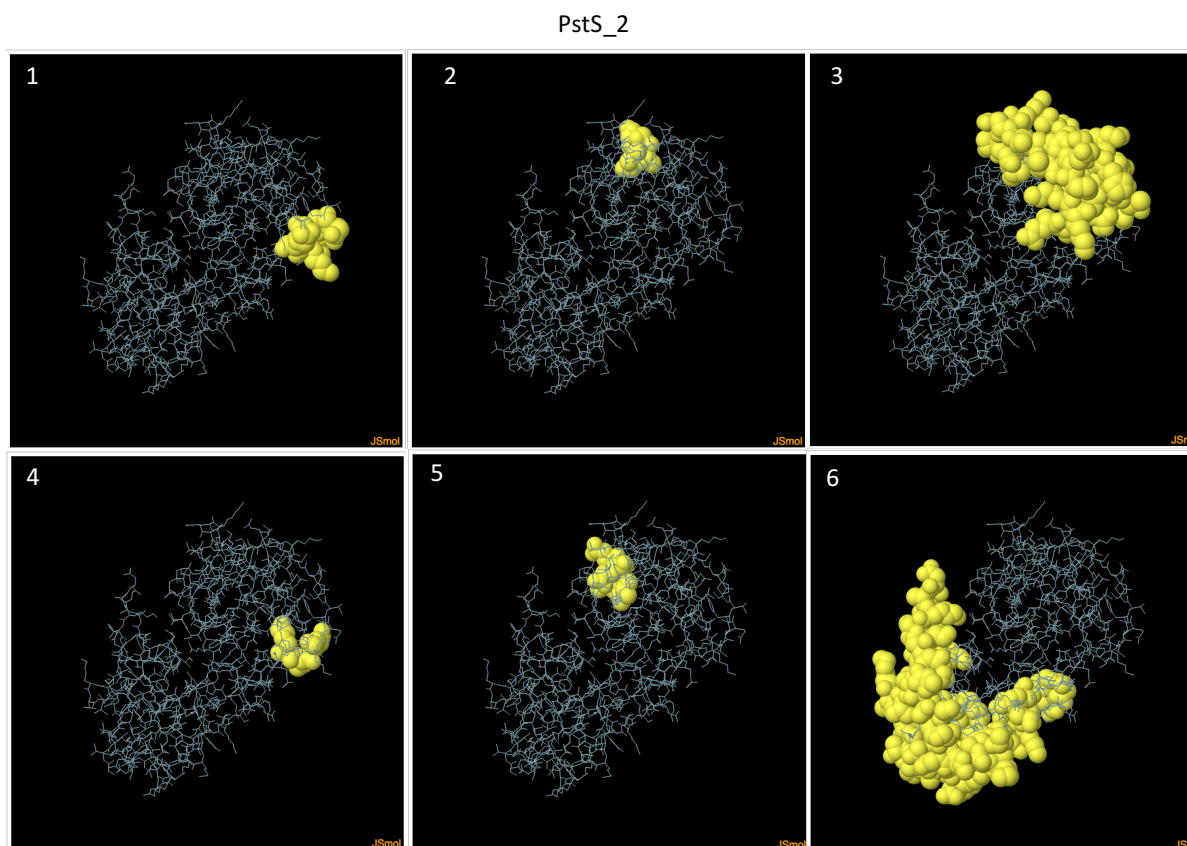


Figure A41 ElliPro predicted discontinuous epitopes for PstS_2.

The numbers represent the different epitopes predicted in order of decreasing overall score with 1 having the highest score. The yellow spheres represent residues that are part of the predicted epitope.



Figure A42 DiscoTope2 predicted discontinuous epitopes for PstS_2.

The parts coloured yellow are the predicted epitopes.

ArtP_1

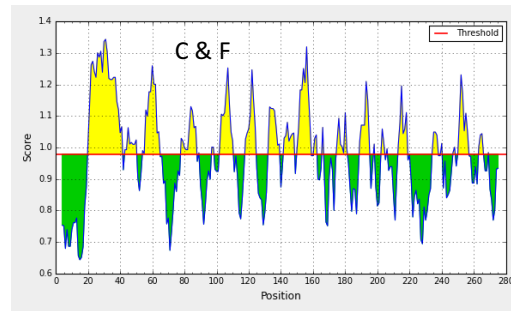
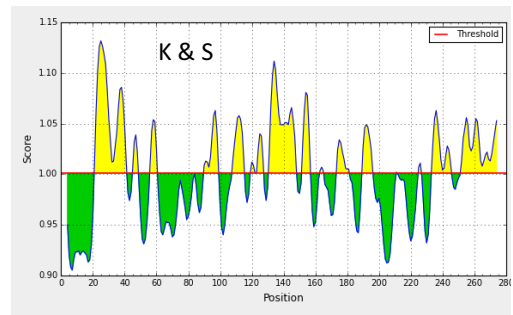
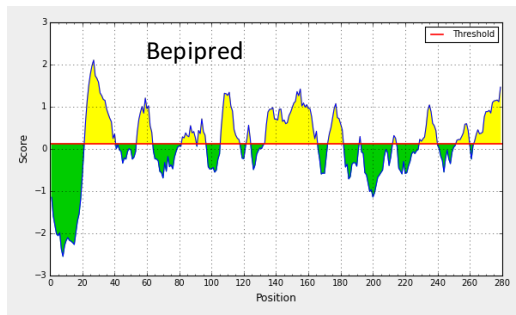


Figure A43 Linear epitope predictions of the ArtP_1 protein.

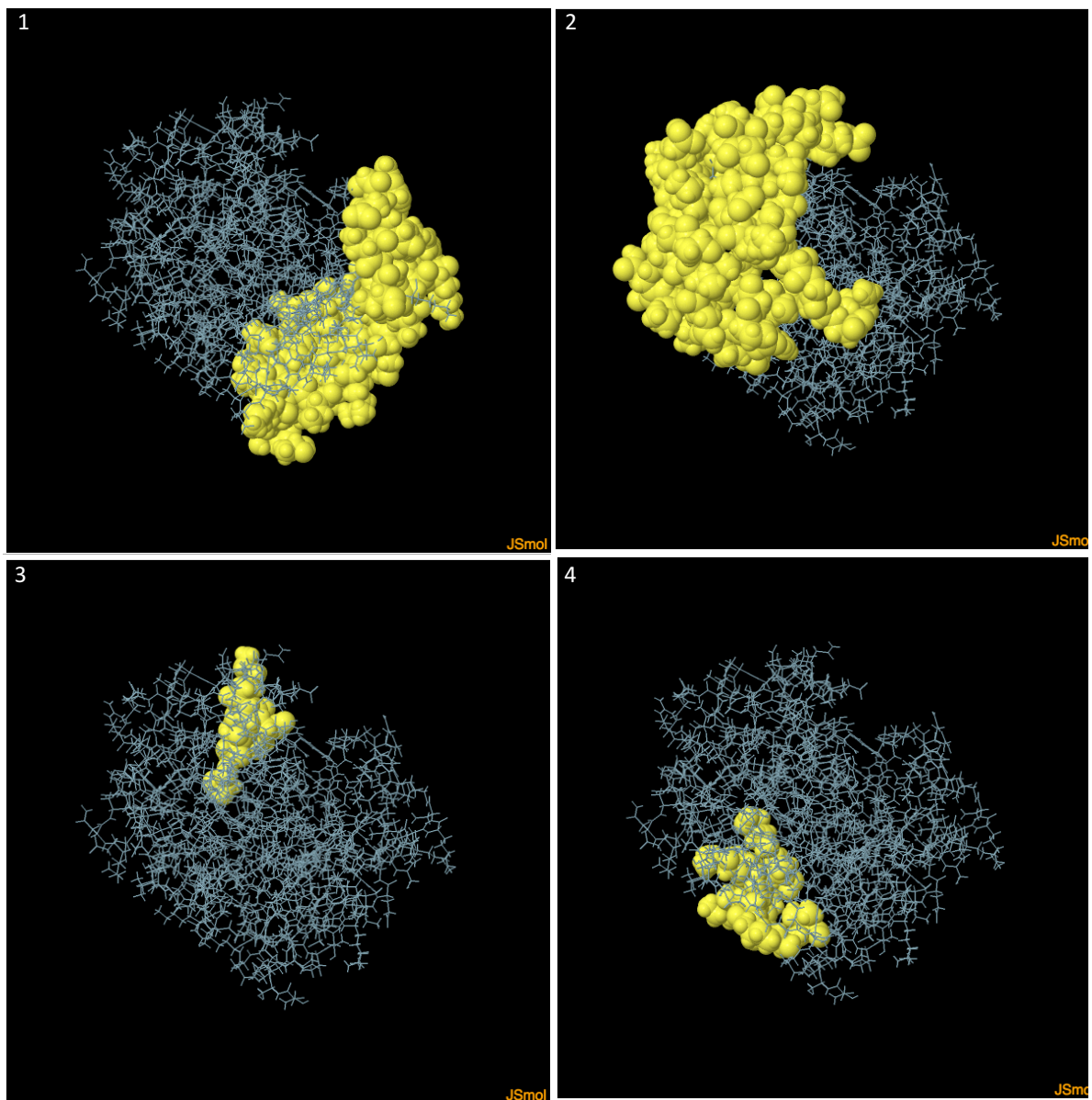


Figure A44 ElliPro predicted discontinuous epitopes for ArtP_1.

The numbers represent the different epitopes predicted in order of decreasing overall score with 1 having the highest score. The yellow spheres represent residues that are part of the predicted epitope.

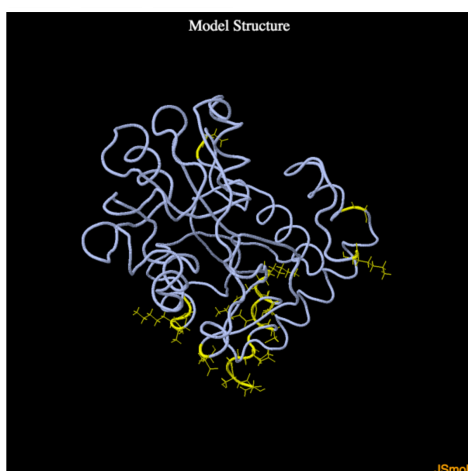
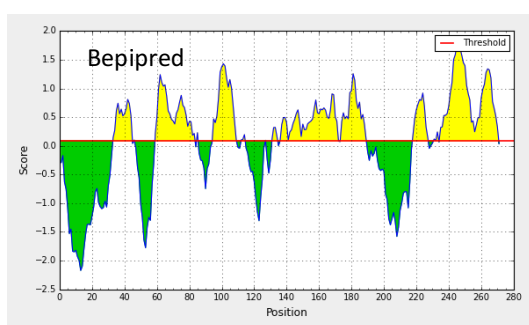


Figure A45 DiscoTope2 predicted discontinuous epitopes for ArtP_1.

The parts coloured yellow are the predicted epitopes.



GlnH

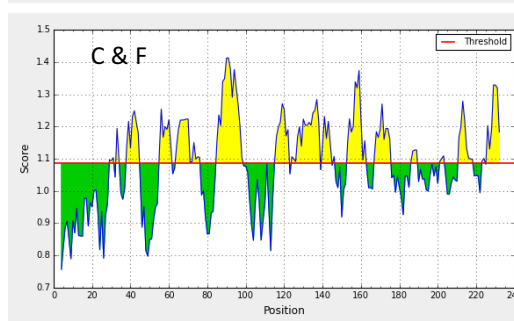
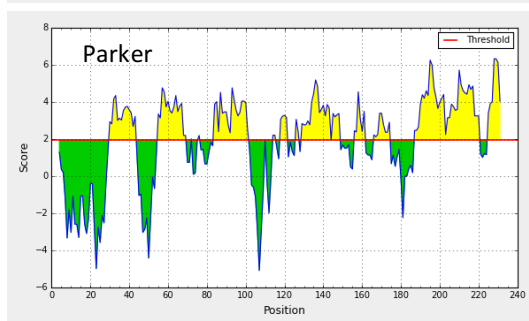
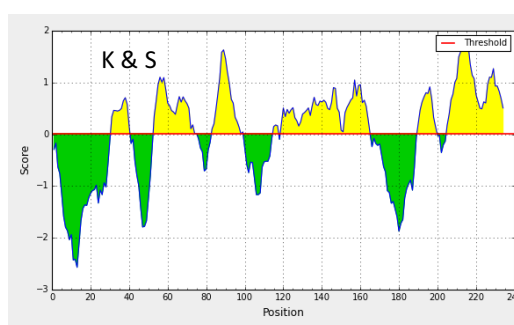


Figure A46 Linear epitope predictions of the GlnH protein.

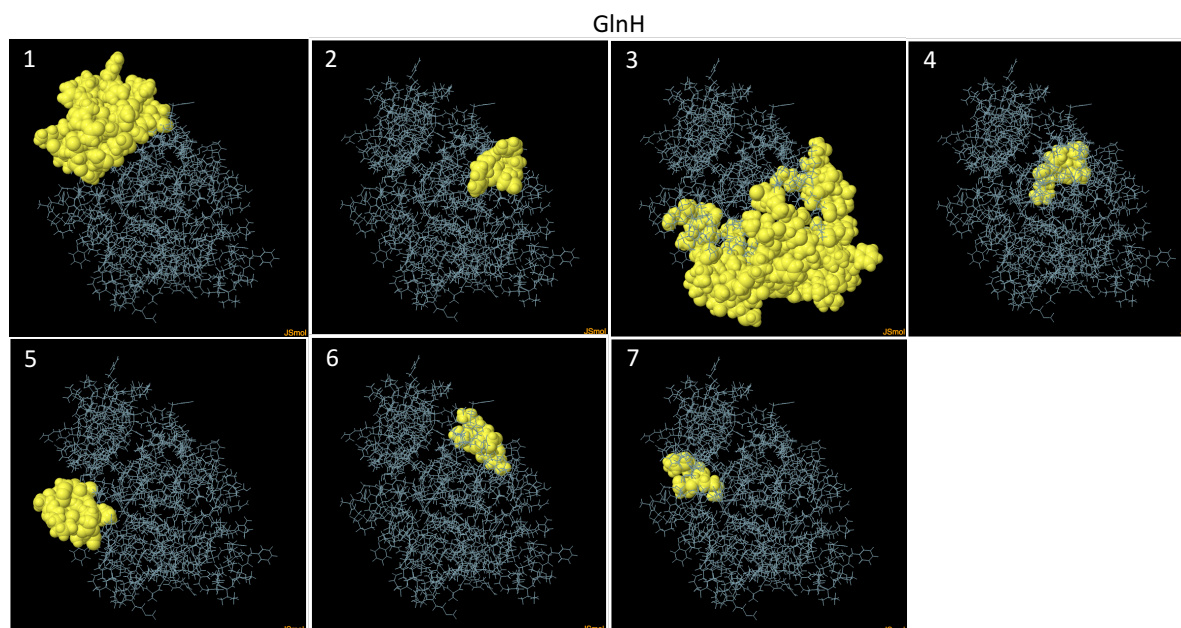


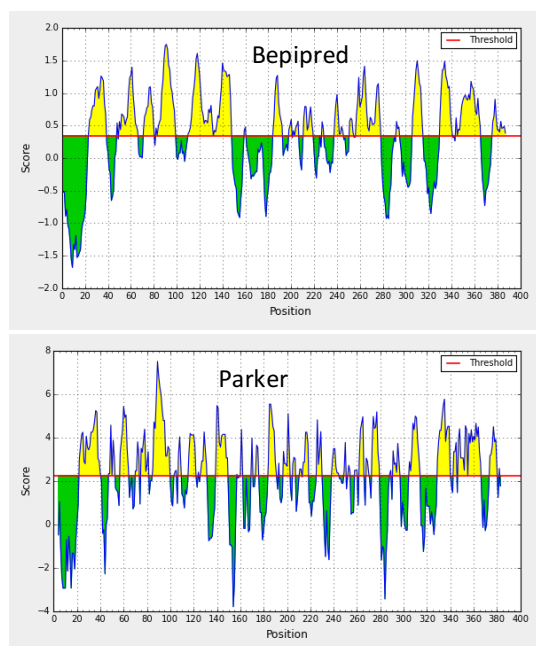
Figure A47 ElliPro predicted discontinuous epitopes for GlnH.

The numbers represent the different epitopes predicted in order of decreasing overall score with 1 having the highest score. The yellow spheres represent residues that are part of the predicted epitope.



Figure A48 DiscoTope2 predicted discontinuous epitopes for GlnH.

The parts coloured yellow are the predicted epitopes.



LivJ

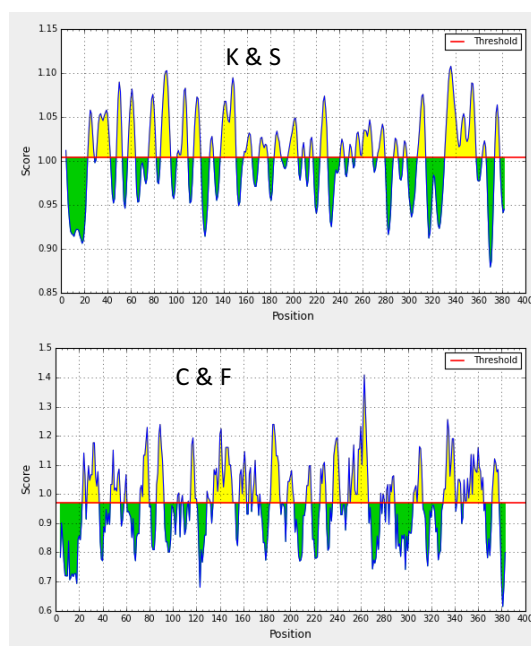


Figure A49 Linear epitope predictions of the LivJ protein.

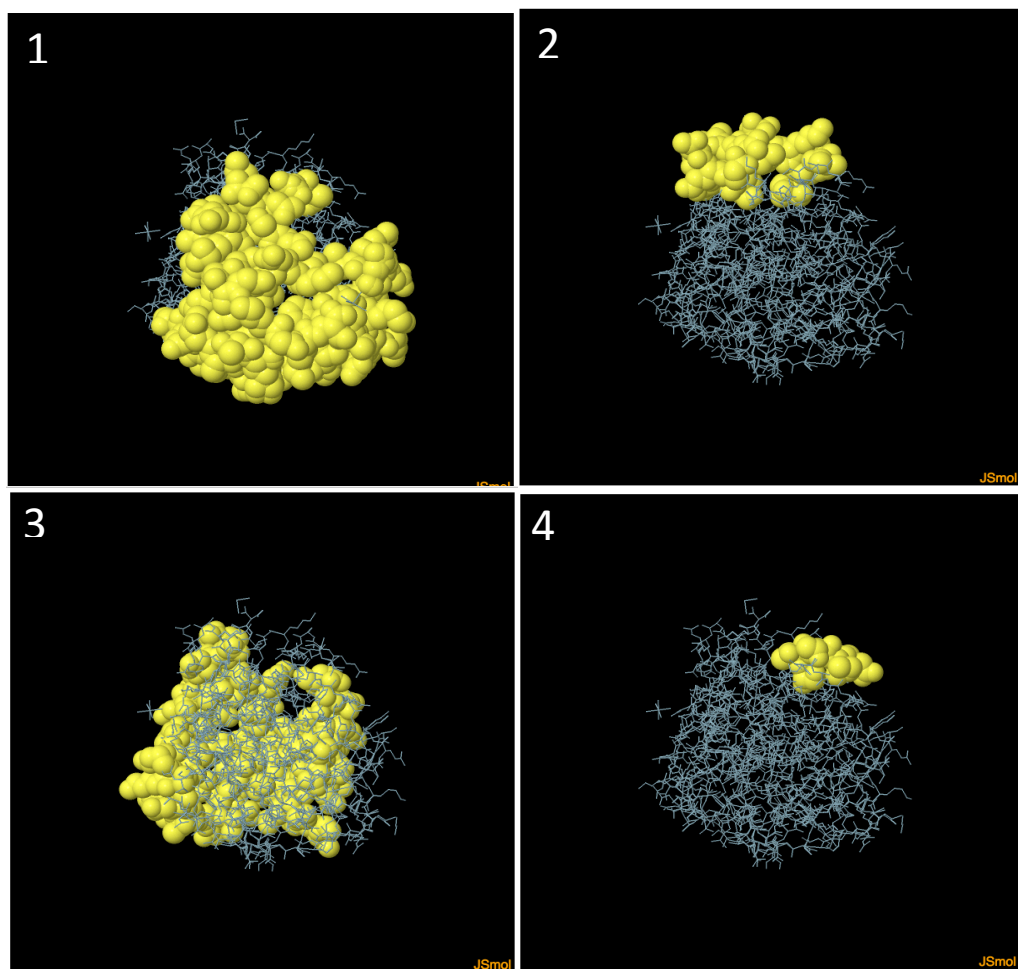


Figure A50 ElliPro predicted discontinuous epitopes for LivJ.

The numbers represent the different epitopes predicted in order of decreasing overall score with 1 having the highest score. The yellow spheres represent residues that are part of the predicted epitope.

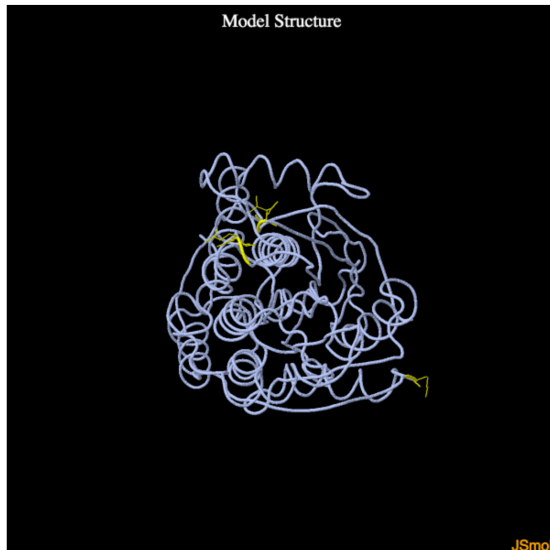
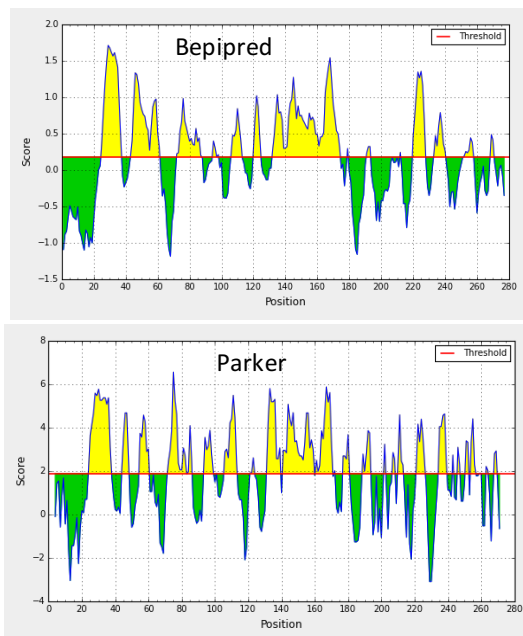


Figure A51 DiscoTope2 predicted discontinuous epitopes for LivJ.

The parts coloured yellow are the predicted epitopes.



TcyA

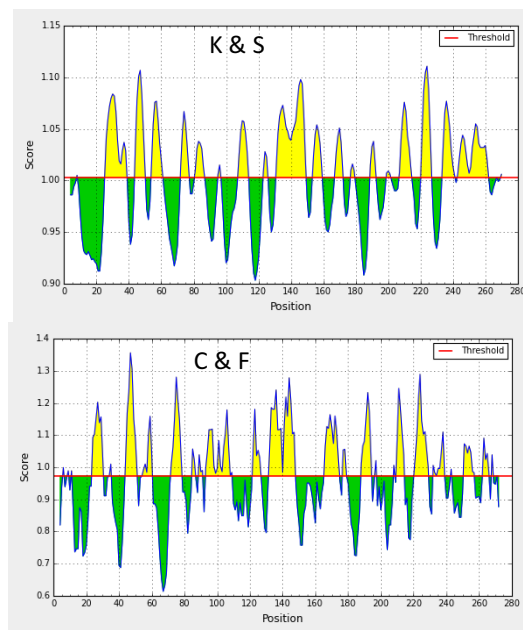


Figure A52 Linear epitope predictions of the TcyA protein.

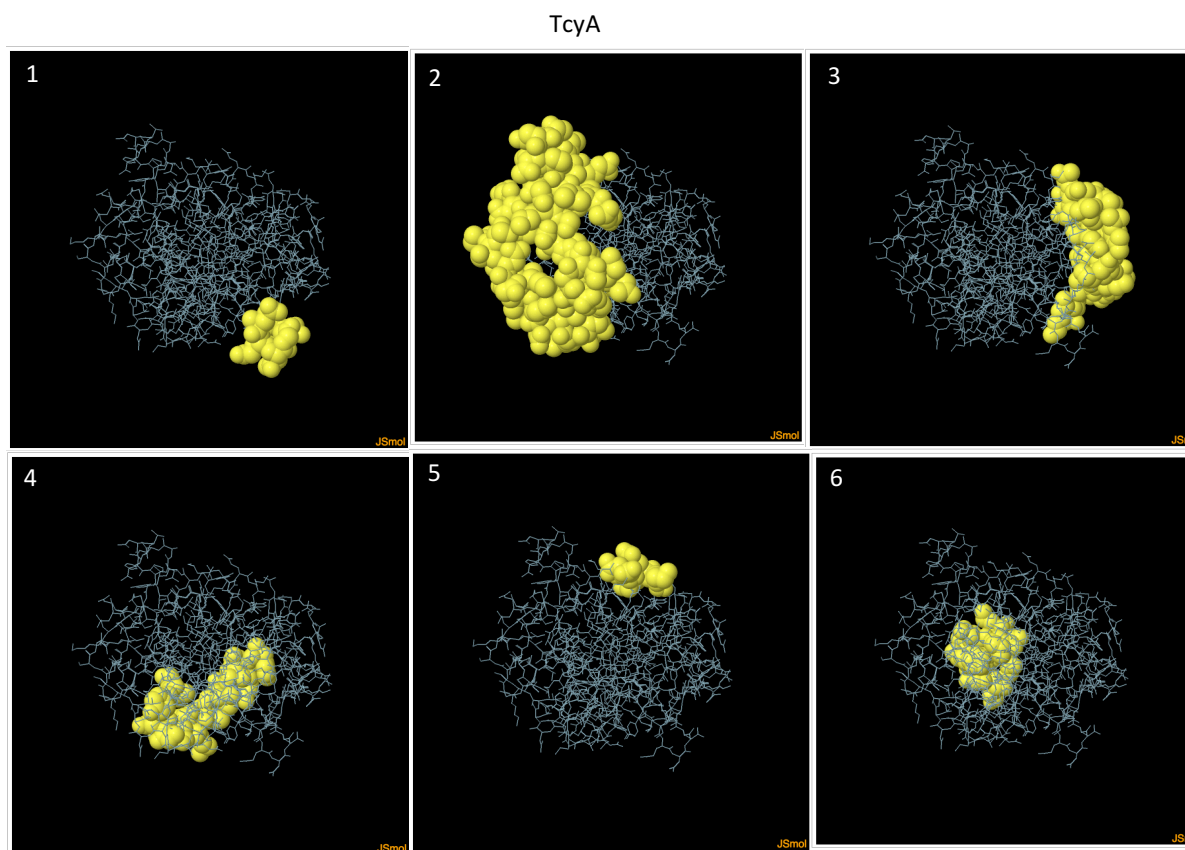


Figure A53 ElliPro predicted discontinuous epitopes for TcyA.

The numbers represent the different epitopes predicted in order of decreasing overall score with 1 having the highest score. The yellow spheres represent residues that are part of the predicted epitope.

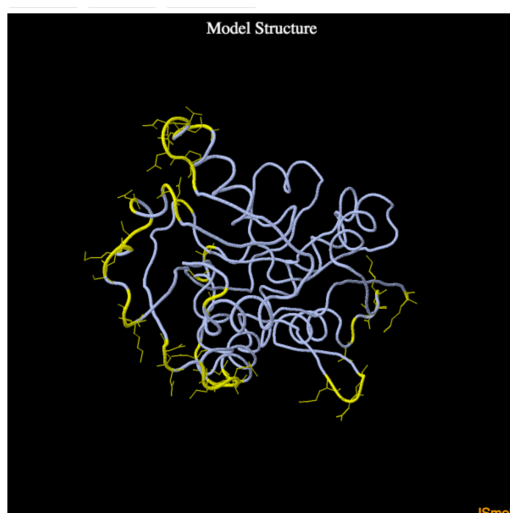


Figure A54 DiscoTope2 predicted discontinuous epitopes for TcyA.
The parts coloured yellow are the predicted epitopes.

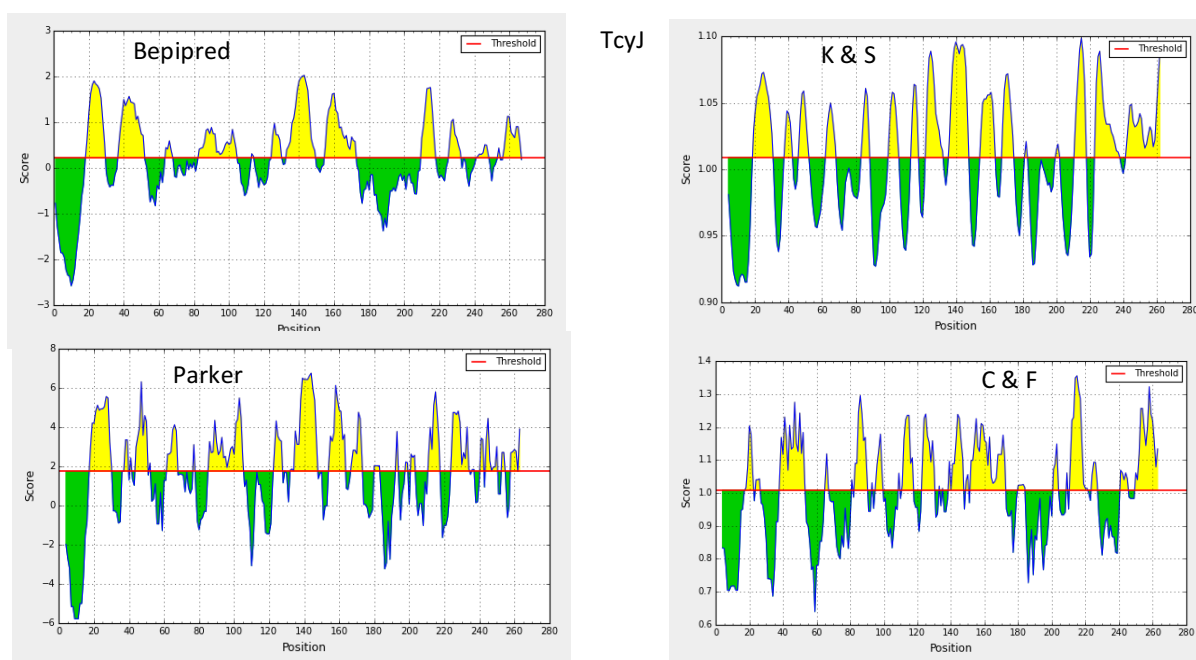


Figure A55 Linear epitope predictions of the TcyJ protein.

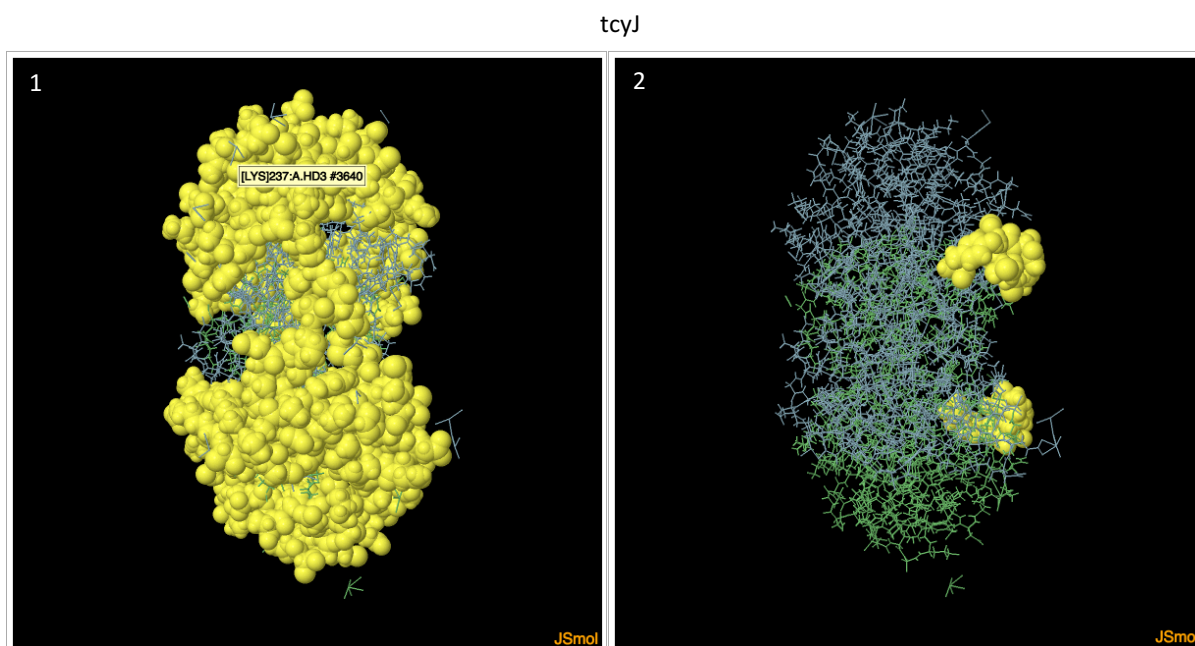


Figure A56 ElliPro predicted discontinuous epitopes for TcyJ.

The numbers represent the different epitopes predicted in order of decreasing overall score with 1 having the highest score. The yellow spheres represent residues that are part of the predicted epitope.

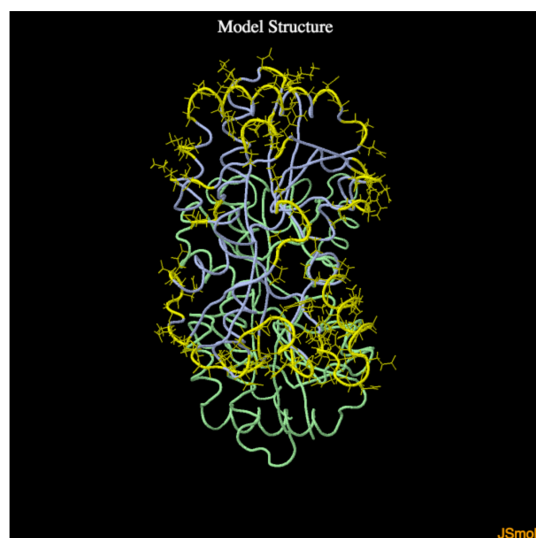


Figure A57 DiscoTope2 predicted discontinuous epitopes for TcyJ.

The parts coloured yellow are the predicted epitopes.

Group 2074

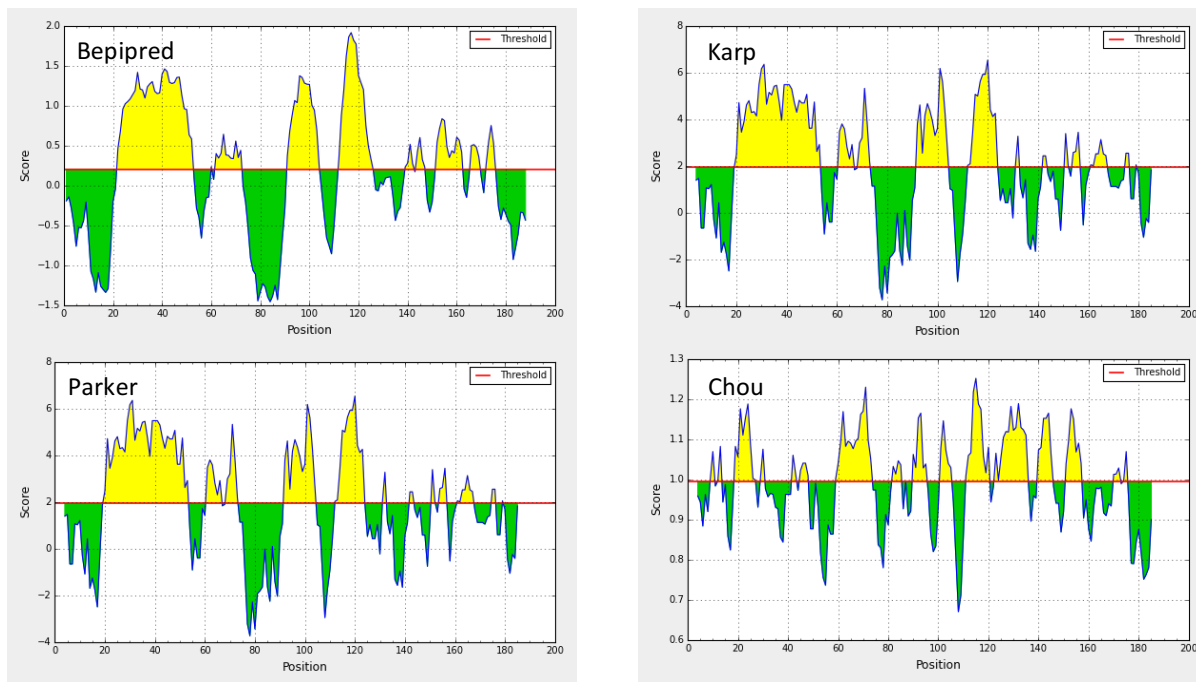


Figure A58 Linear epitope predictions of the Group_2074 protein.

Group_2074

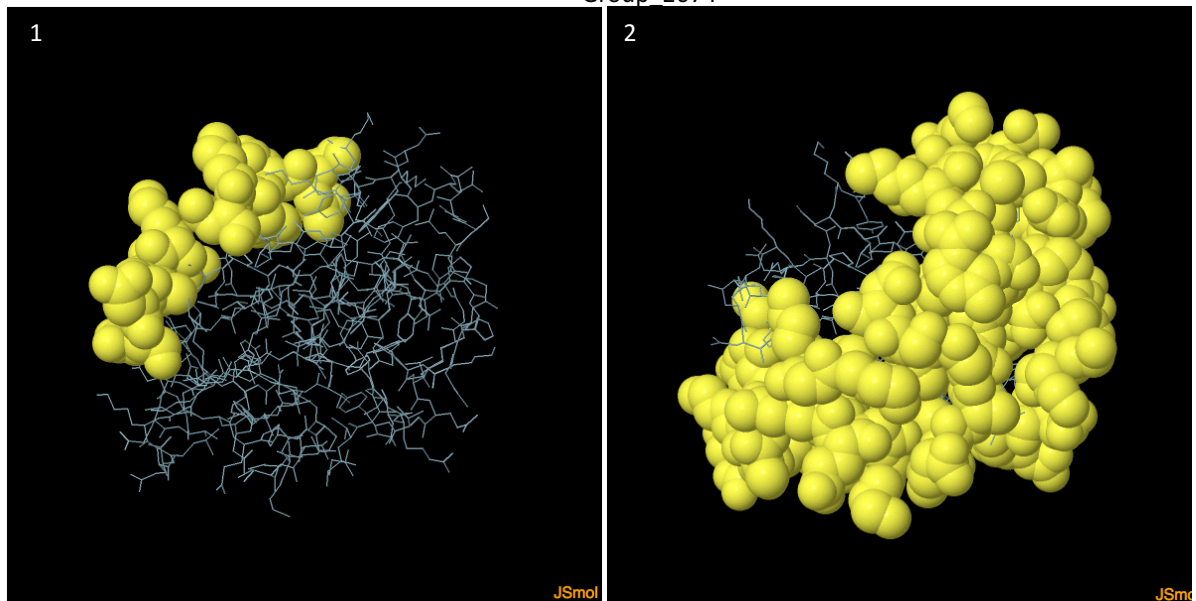


Figure A59 ElliPro predicted discontinuous epitopes for Group_2074.

The numbers represent the different epitopes predicted in order of decreasing overall score with 1 having the highest score. The yellow spheres represent residues that are part of the predicted epitope.



Figure A60 DiscoTope2 predicted discontinuous epitopes for Group_2074.
The parts coloured yellow are the predicted epitopes.

Group_2298

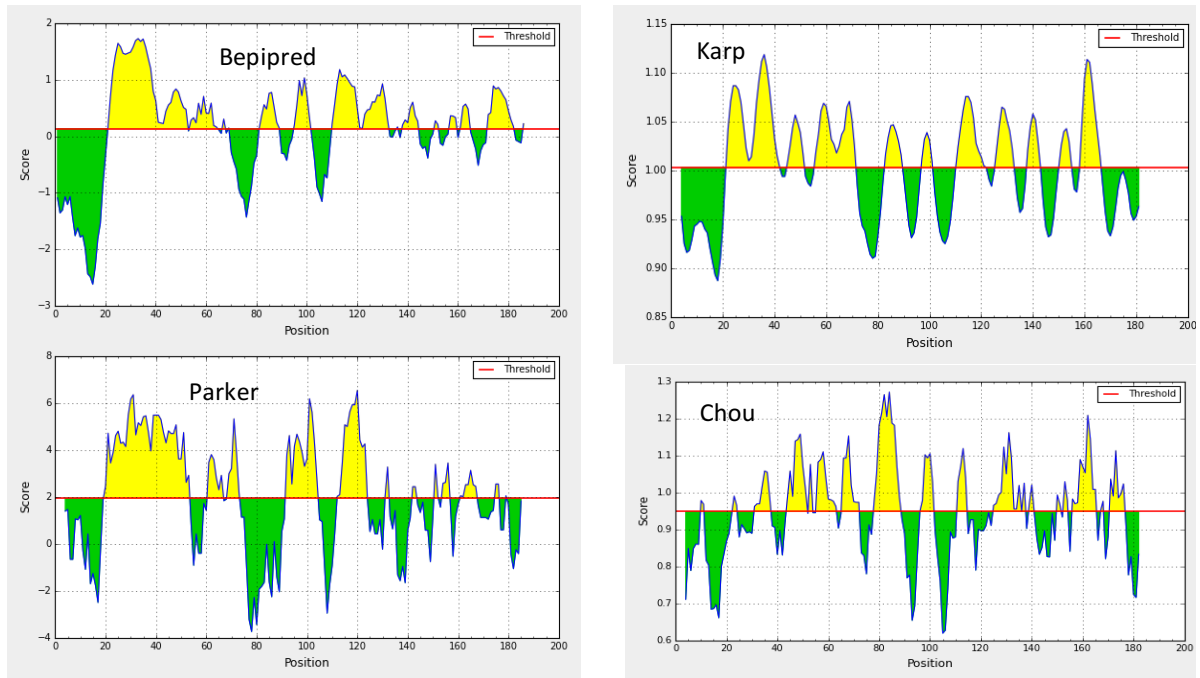


Figure A61 Linear epitope predictions of the Group_2298 protein.

Group_2298

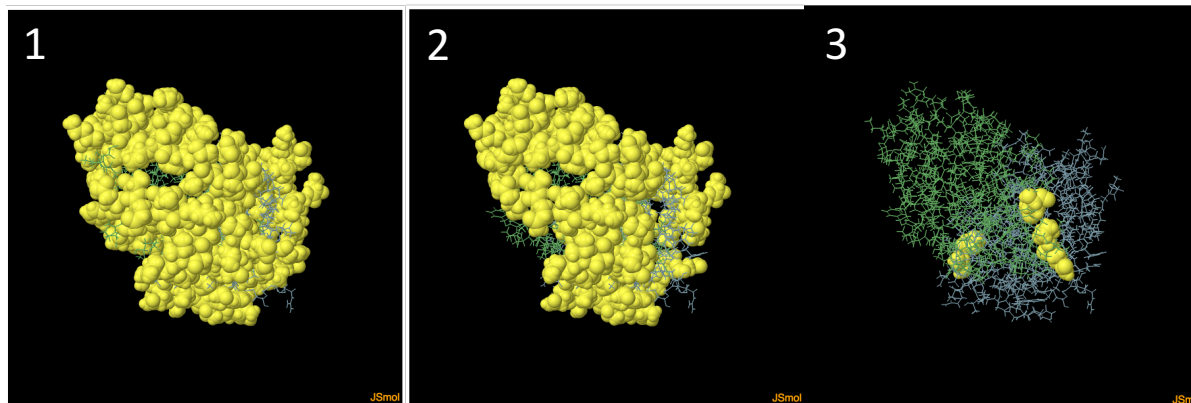


Figure A62 ElliPro predicted discontinuous epitopes for Group_2298.

The numbers represent the different epitopes predicted in order of decreasing overall score with 1 having the highest score. The yellow spheres represent residues that are part of the predicted epitope.

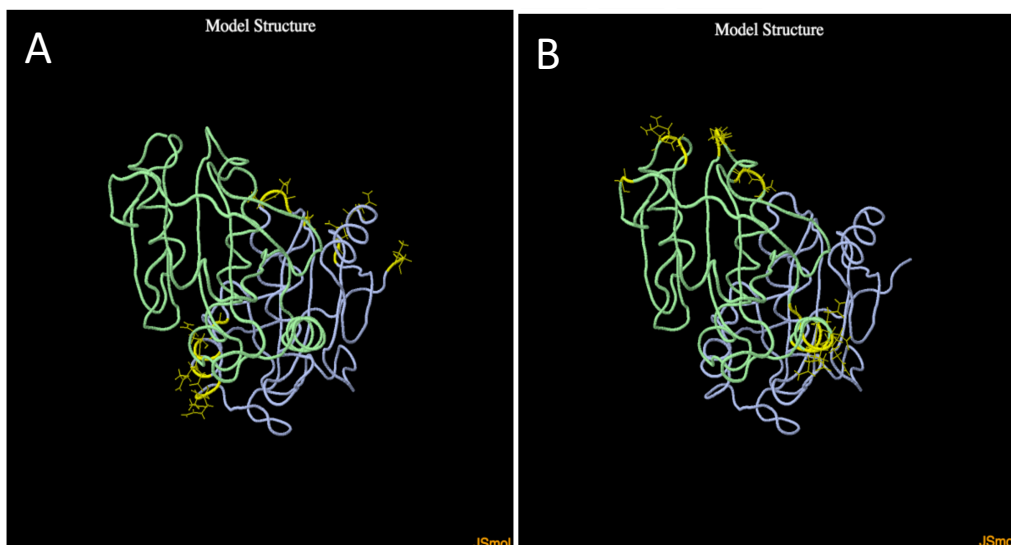


Figure A63 DiscoTope2 predicted discontinuous epitopes for Group_2298.

The parts coloured yellow are the predicted epitopes.

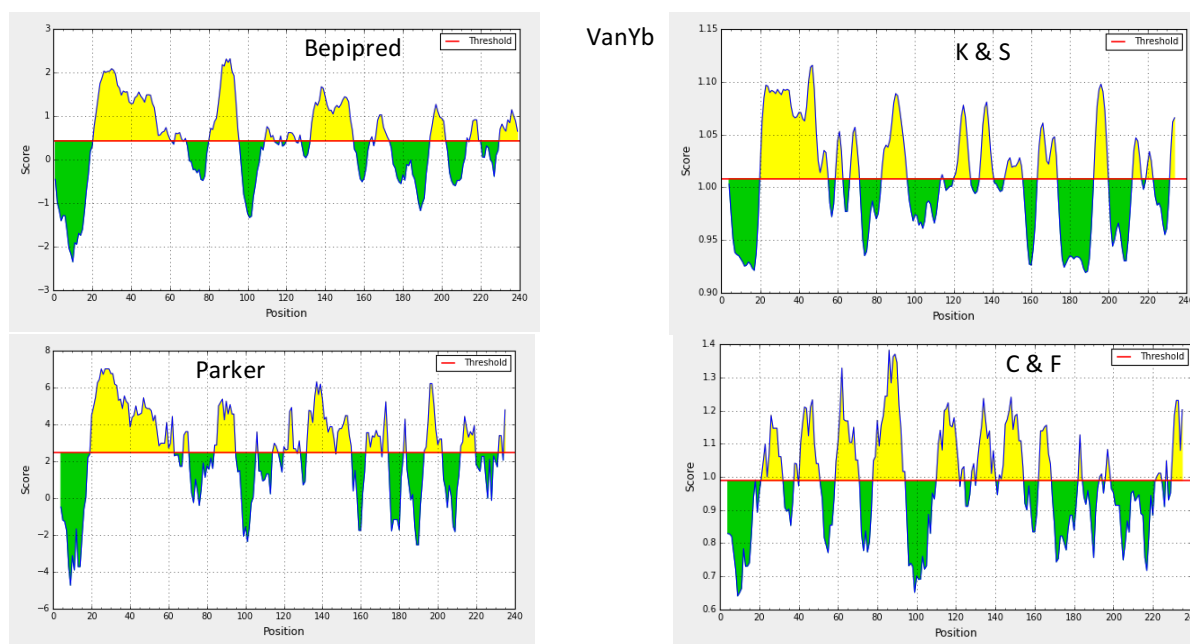


Figure A64 Linear epitope predictions of the VanYb protein.

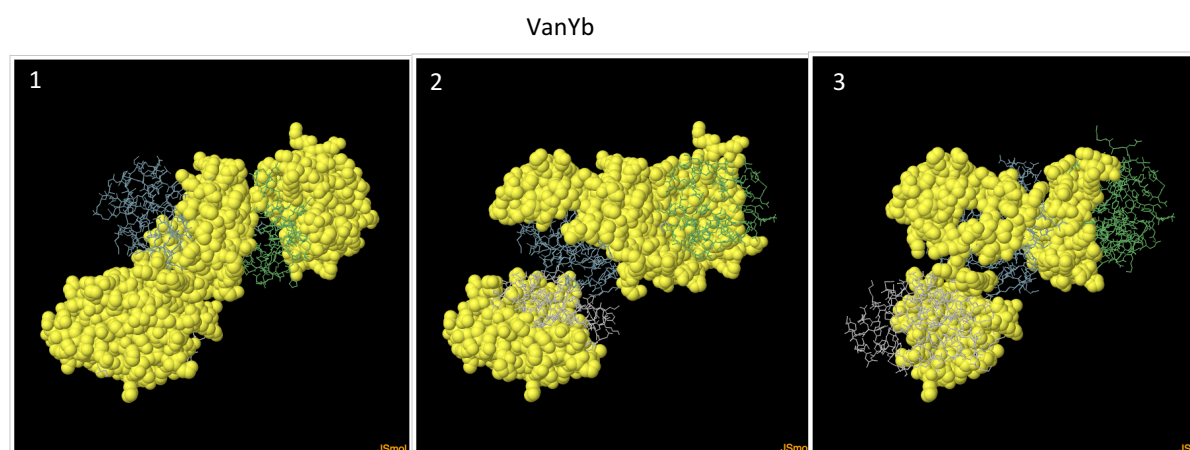


Figure A65 ElliPro predicted discontinuous epitopes for VanYb.

The numbers represent the different epitopes predicted in order of decreasing overall score with 1 having the highest score. The yellow spheres represent residues that are part of the predicted epitope.

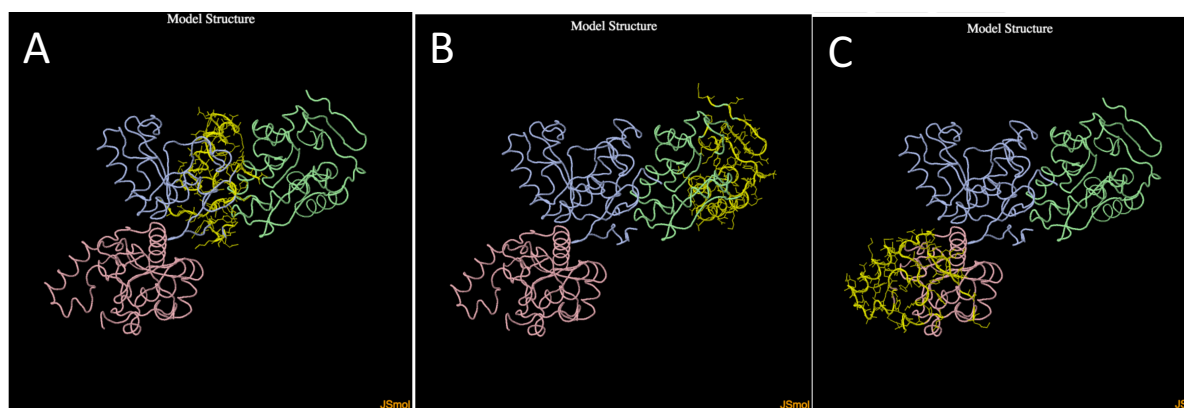
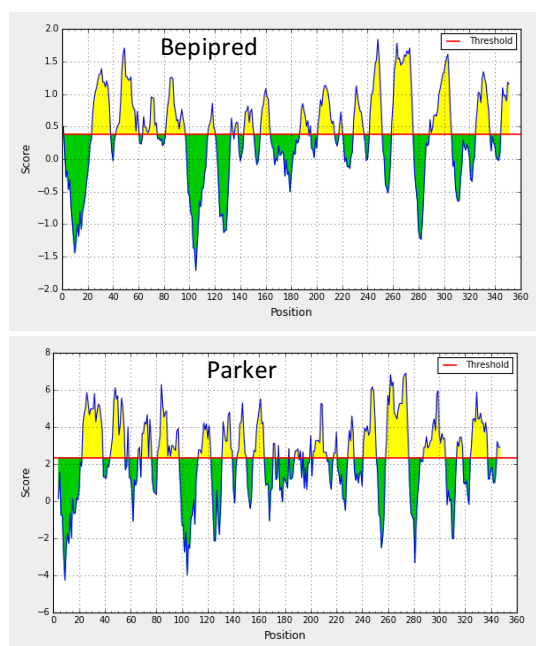


Figure A66 DiscoTope2 predicted discontinuous epitopes for VanYb.

The parts coloured yellow are the predicted epitopes.



TmpC

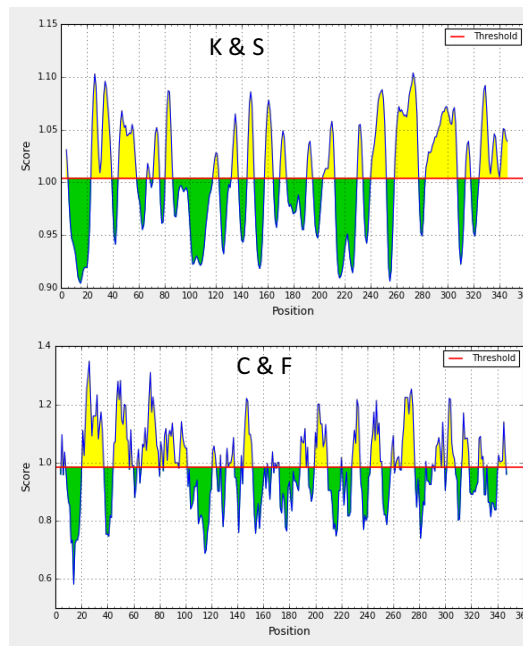


Figure A67 Linear epitope predictions of the TmpC protein.

TmpC

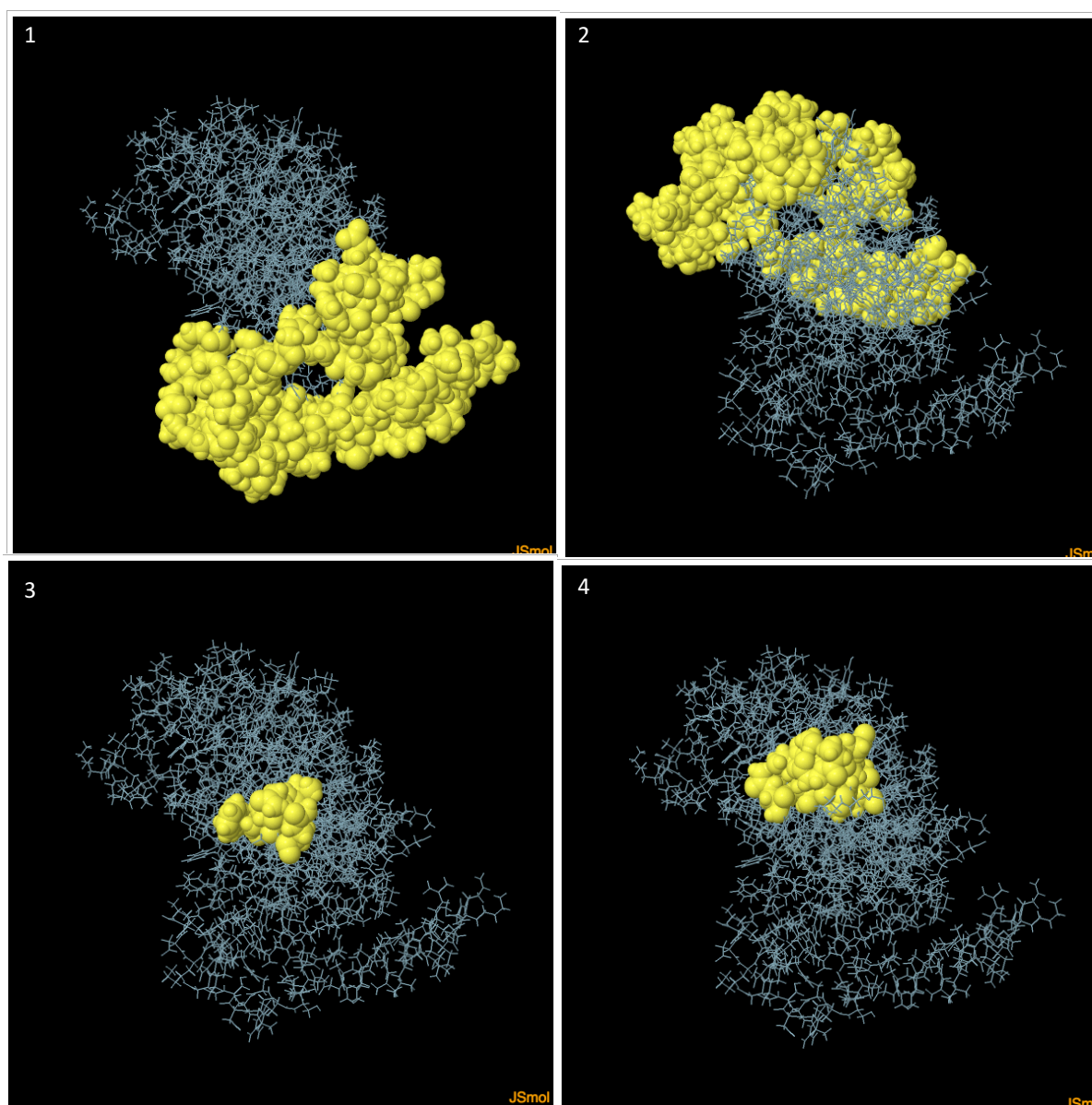


Figure A68 ElliPro predicted discontinuous epitopes for TmpC.

The numbers represent the different epitopes predicted in order of decreasing overall score with 1 having the highest score. The yellow spheres represent residues that are part of the predicted epitope.



Figure A69 DiscoTope2 predicted discontinuous epitopes for TmpC.
The parts coloured yellow are the predicted epitopes.

Group_510

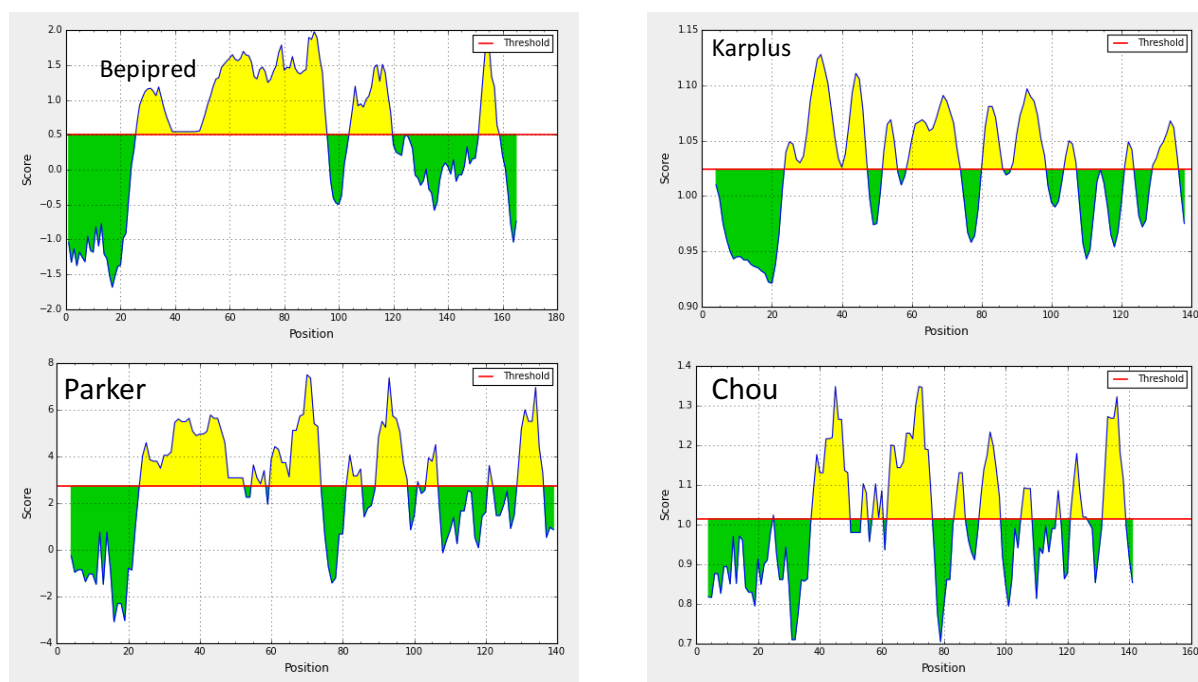


Figure A70 Linear epitope predictions of the Group_510 protein.

Group_510

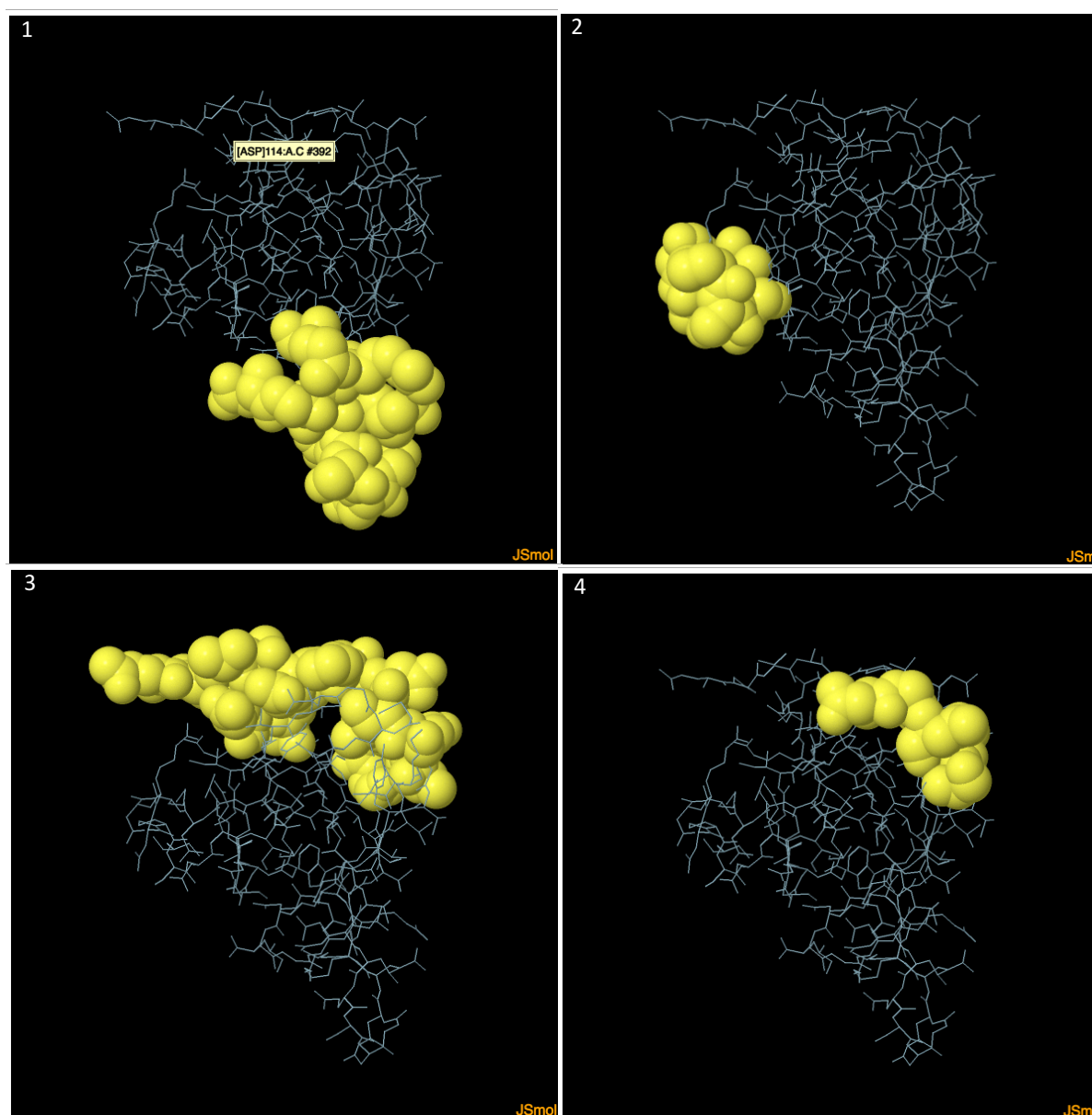


Figure A71 ElliPro predicted discontinuous epitopes for Group_510.

The numbers represent the different epitopes predicted in order of decreasing overall score with 1 having the highest score. The yellow spheres represent residues that are part of the predicted epitope.

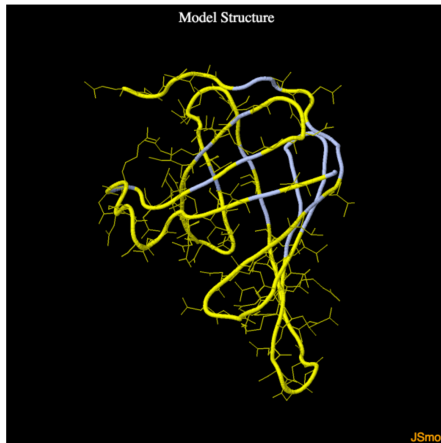
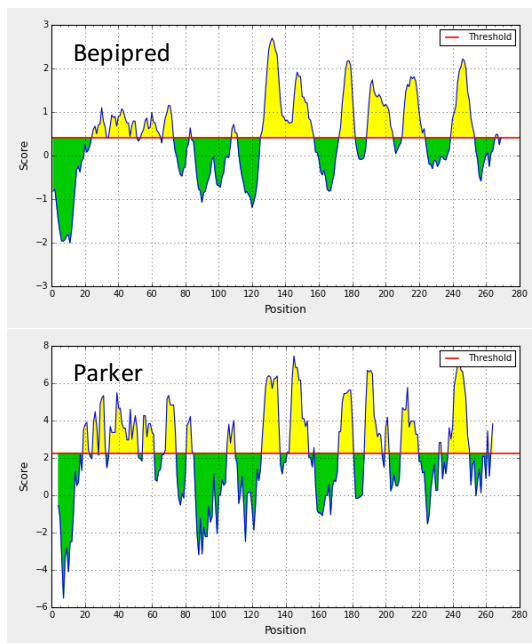


Figure A72 DiscoTope2 predicted discontinuous epitopes for Group_510.
The parts coloured yellow are the predicted epitopes.



Group_6587

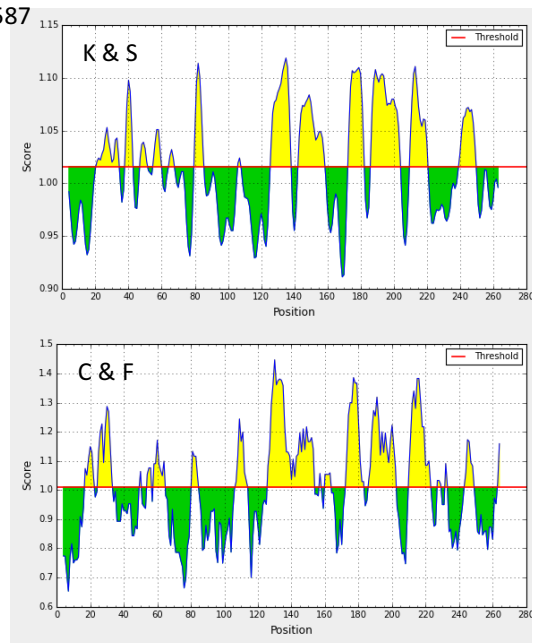


Figure A73 Linear epitope predictions of the Group_6587 protein.

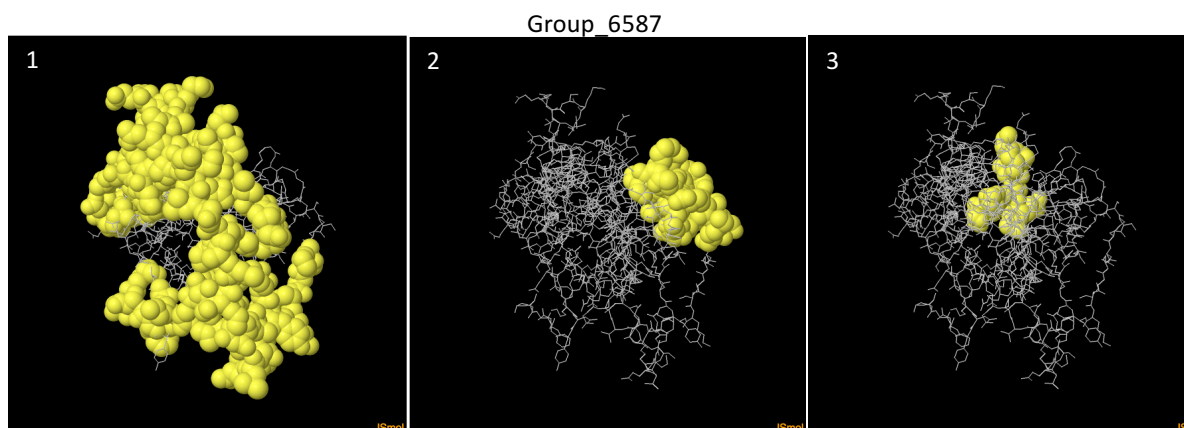


Figure A74 ElliPro predicted discontinuous epitopes for Group_6587.

The numbers represent the different epitopes predicted in order of decreasing overall score with 1 having the highest score. The yellow spheres represent residues that are part of the predicted epitope.

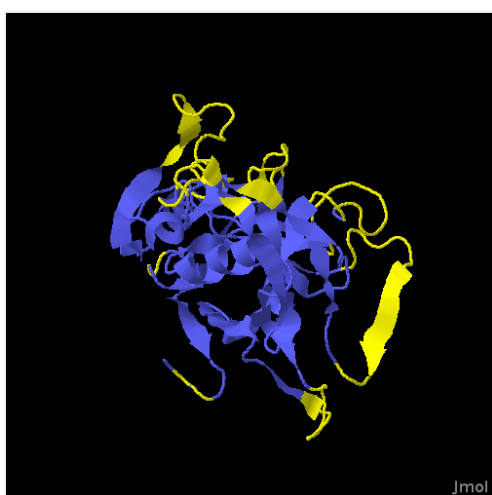


Figure A75 DiscoTope2 predicted discontinuous epitopes for Group_6587.

The parts coloured yellow are the predicted epitopes.

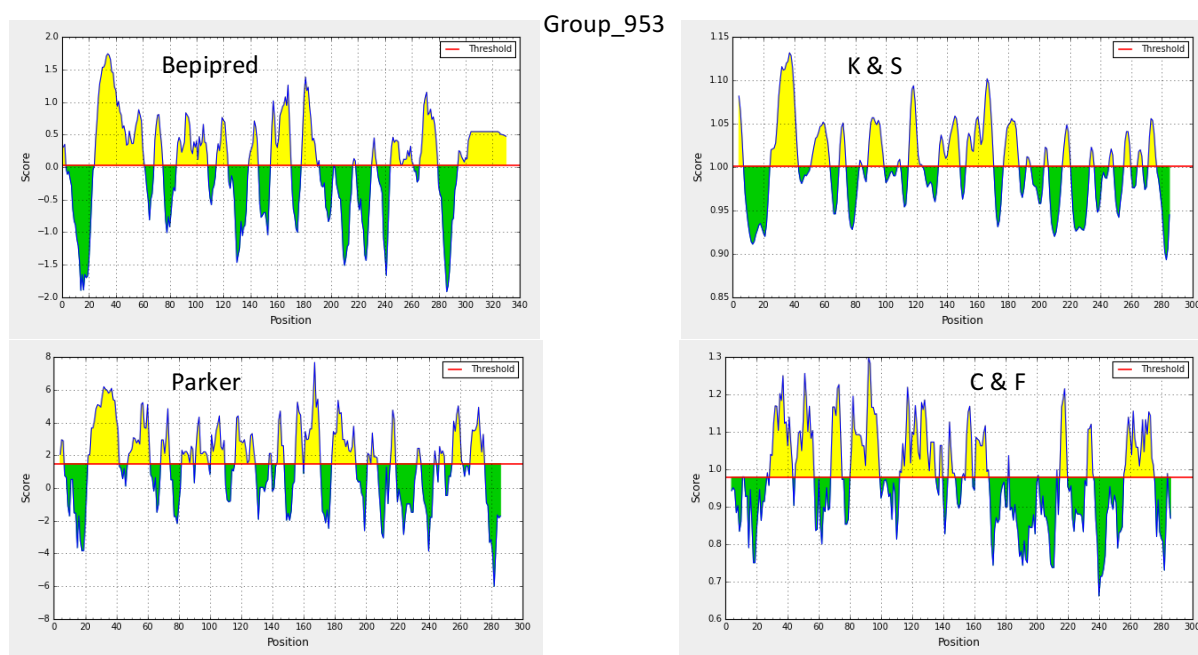


Figure A76 Linear epitope predictions of the Group_953 protein.

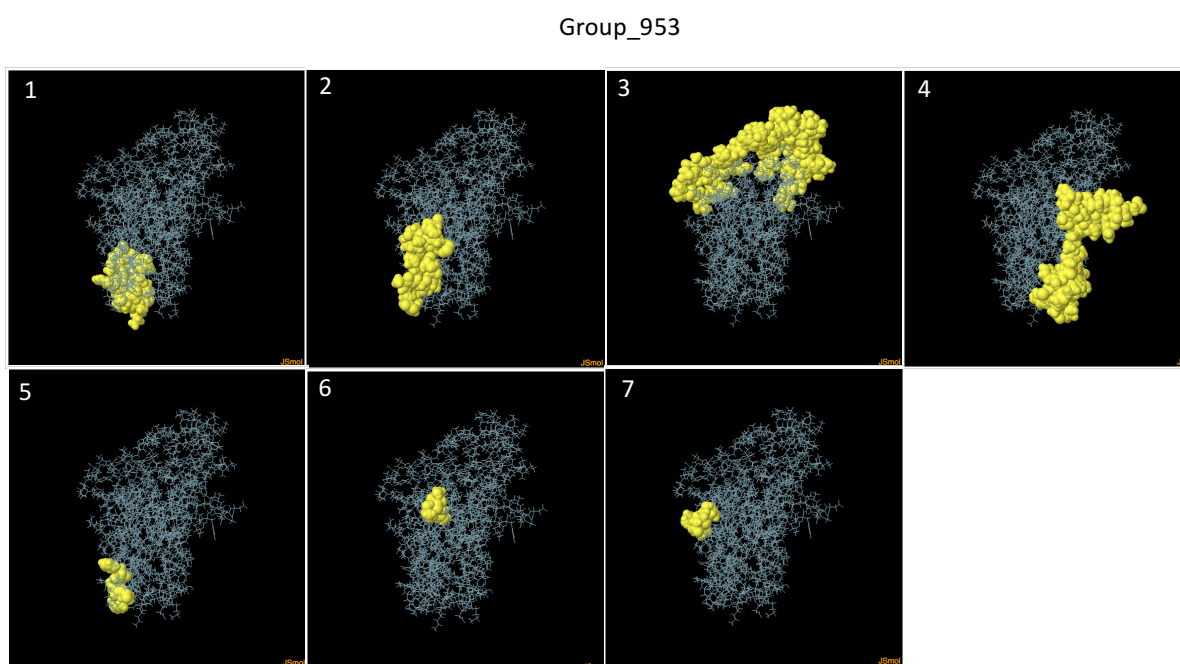


Figure A77 ElliPro predicted discontinuous epitopes for Group_953.

The numbers represent the different epitopes predicted in order of decreasing overall score with 1 having the highest score. The yellow spheres represent residues that are part of the predicted epitope.

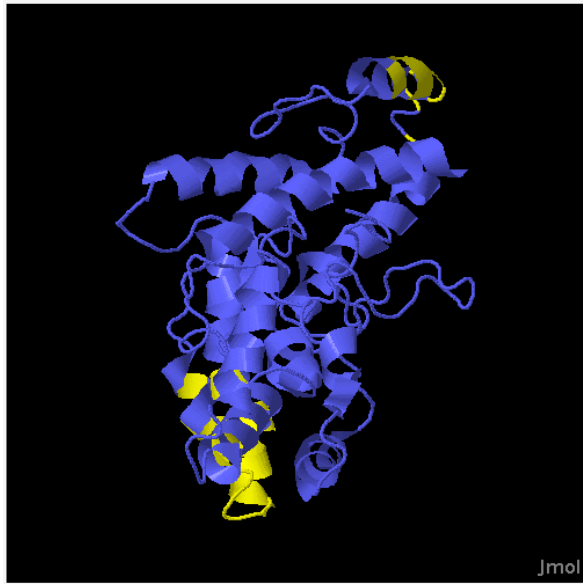


Figure A78 DiscoTope2 predicted discontinuous epitopes for Group_953.

The parts coloured yellow are the predicted epitopes.

Group_1655

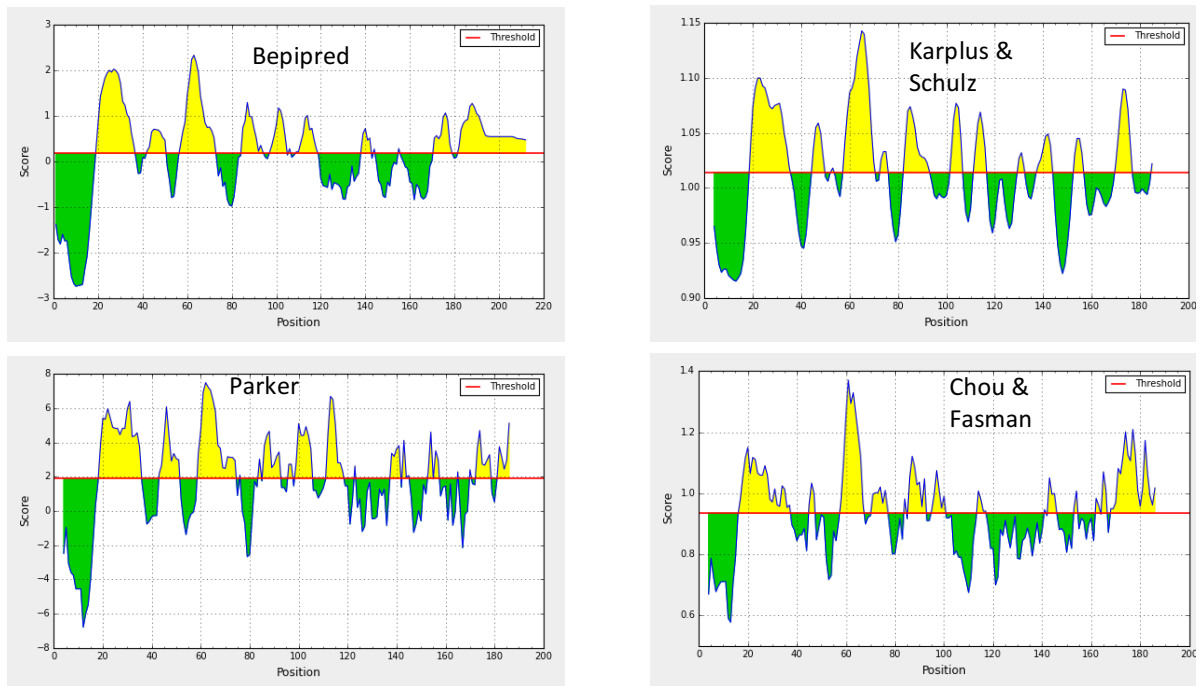


Figure A79 Linear epitope predictions of the Group_1655 protein.

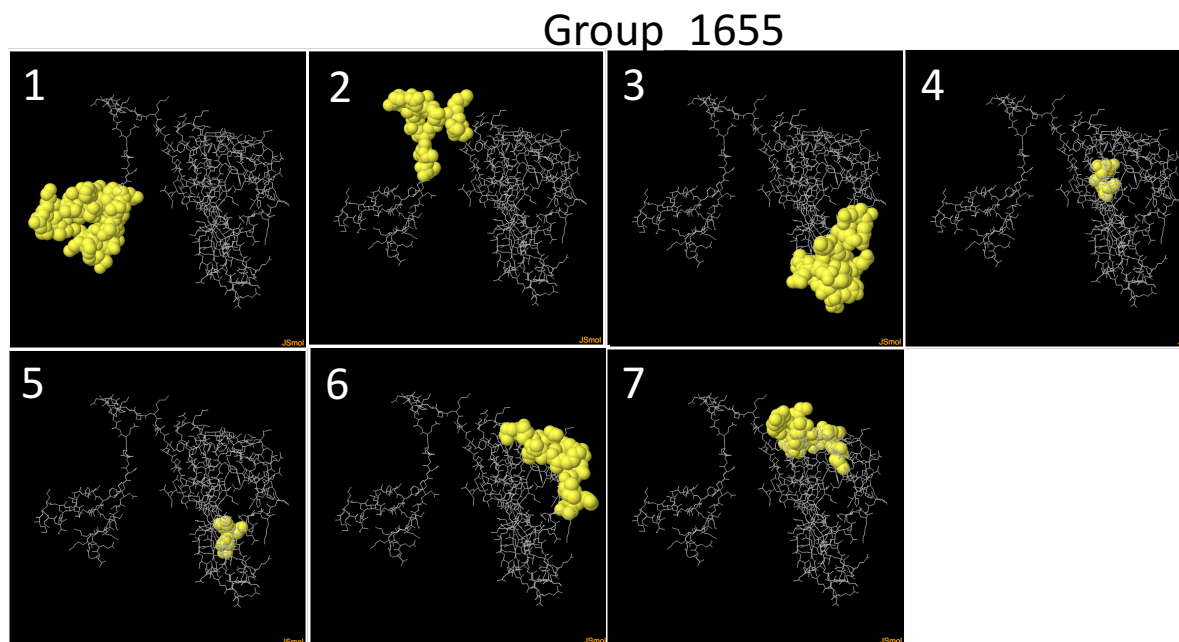


Figure A80 ElliPro predicted discontinuous epitopes for Group_1655.

The numbers represent the different epitopes predicted in order of decreasing overall score with 1 having the highest score. The yellow spheres represent residues that are part of the predicted epitope.



Figure A81 DiscoTope2 predicted discontinuous epitopes for Group_1655.

The parts coloured yellow are the predicted epitopes.